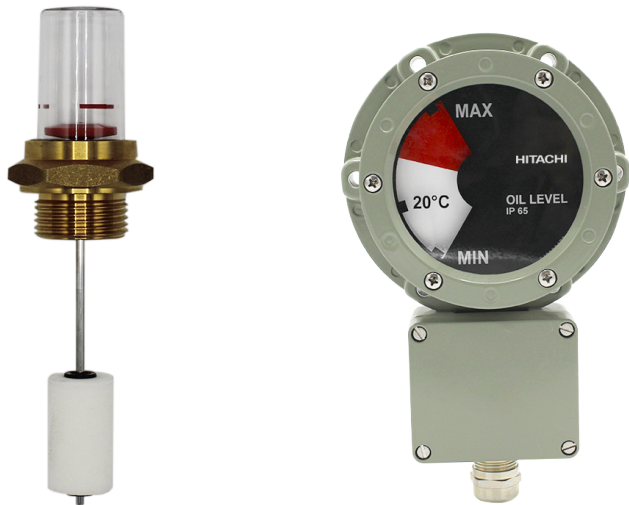


Oil Level Indicators

Reliable measurement for every transformer size

Unexpected or accidental oil leakages can occur in a transformer's lifetime. Oil Level Indicators provide a clear status on the oil level inside the transformer tank, the conservator, or the on-load tap-changer.

Available for both conservator type or hermetically sealed transformers, certain models offer up to 4 contacts to alarm or trip if the fluid reaches the minimum or the maximum preset values.

















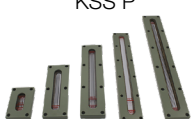
Features:

- Wide variety for every transformer size
- Robust design and field-proven reliability
- Quality driven production
- Quick Quotes and Deliveries

Features:

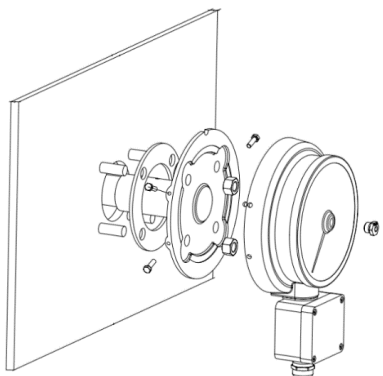
- Oil-filled transformers with or without conservator
- Conservator with rubber bags
- On-load tap changers (OLTC)
- Hermetically sealed transformers.

Wide variety for every transformer size

Application	Model	Shaft Length (mm)	Outer Dimension (mm)	Switch	Product Number
Transformers with conservator tank	KSS A 	308*	□60	-	1ZTE001001E0001
	KSS B 	308*	□80	-	1ZTE002003E0001
	KSS F 	308*	Ø82	-	1ZTE006005E0001
	KSS G 	308*	Ø100	-	1ZTE007002E0001
	KSS J 	51	□60	-	1ZTE010001E0001
	KYS A 	790*	Ø182	2xCO	1ZTE012001E0041
				4xCO	1ZTE012002E0009
	KYS B 	Up to 2000	Ø182	2xCO	1ZTE013001E0048
				4xCO	1ZTE013005E0009
	KYS C 	790*	Ø140	2xCO	1ZTE014001E0039
			Ø220	4xCO	1ZTE014007E0003
				2xCO	1ZTE015001E0026
				4xCO	1ZTE015002E0004
			Ø340	2xCO	1ZTE016001E0008
				4xCO	1ZTE016002E0003
Hermetically sealed transformers	KSS D 	90	SW45	-	1ZTE004009E0021
	KSS DP 	90	SW45	-	1ZTE004009E0022
	KSS E 	157	SW60	-	1ZTE005001E0001
		210		-	1ZTE005002E0001
	KYS E 	239	Ø88	1xCO	1ZTE009001B0001
		204			1ZTE009001B0002
For both use	KSS C 	n/a	Ø40	-	1ZTE003001E0001
	KSS N 	n/a	153 x 25	-	1ZTE011002E0001
	KSS P 	n/a	98 x 65	-	1ZTE008002E0001
			180 x 65		1ZTE008001E0001
			262 x 65		1ZTE008002E0002
			344 x 65		1ZTE008002E0003
			426 x 65		1ZTE008002E0004

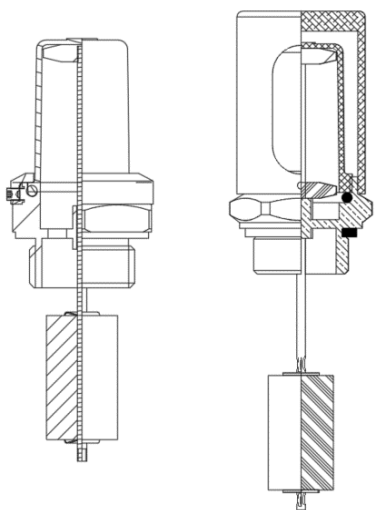
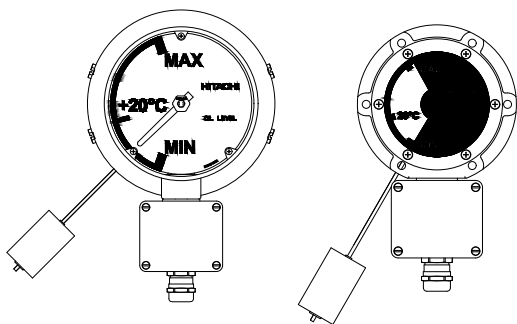
* The following float levers are offered with the abovementioned length as standard, it can be freely adjusted by the customer during installation. Custom options are available on request, including dial design, color, floater arm length, floater type and C5 Medium corrosion protection.

Robust design and field-proven reliability



KYS A, B & C structurally consist of two parts; the isolated flange and the indicator. Indicator unit has no contact with the oil. Indicator unit has ventilation holes to prevent water condensation.

The float movement associated with the oil level is radially transmitted to the magnetic coupling system of the indicator via the float lever. A magnet connected to the float-lever mechanism drives the polarized indicator magnet connected to the pointer. On KYS B, this movement can be axially transmitted through a special joint equipped with a gear system.



KSS C, D, DP, E and KYS E are suitable for incorporation in filling pipes with R1½ internal thread.

These types of magnetic oil level indicators are used in hermetically sealed transformers without gas cushion. They show the level of the oil in the filling pipe and thus offers the possibility to monitor for:

- Gas formation in the transformer
- Accumulations of air pockets in the tank
- Indication of large leaks from the tank

When incorporated in hermetically sealed transformers with nitrogen gas cushioning it is only possible to monitor for large leaks from the tank.

Quality-driven production

Quality is a priority for us. We offer technology leadership, backed by a proven record of addressing diverse challenges and improving standard practices. Our product portfolio is the result of research, manufacturing, and servicing transformers, making us unique in the industry.

Quick quotes and deliveries

We offer standard pricelists and quick delivery times for our standard products listed herein. If required, our engineers can also offer customized solutions for your application.

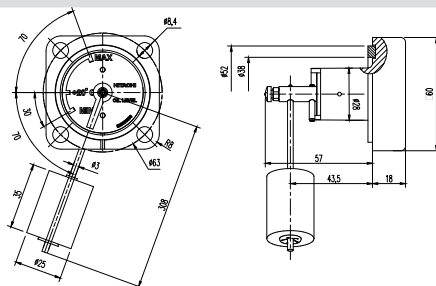
Technical Data

Standard

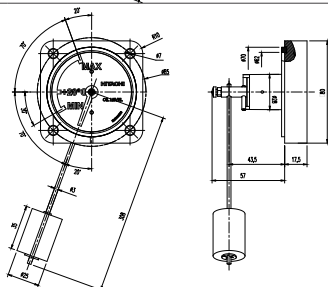
IEC 60076-22-1, EN 50216-5, DIN 42569

Mechanical

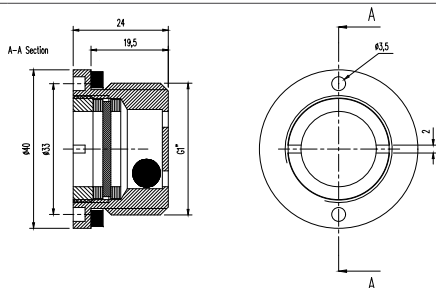
KSS A



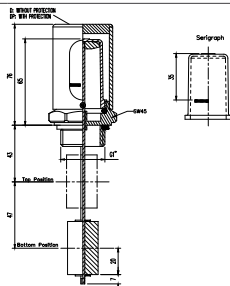
KSS B



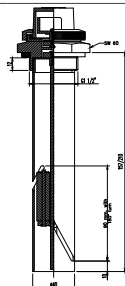
KSS C



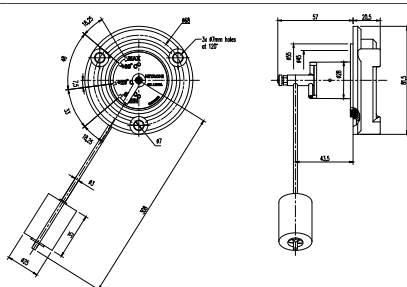
KSS D/DP



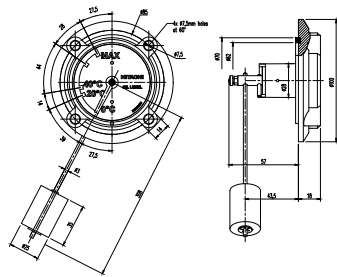
KSS E



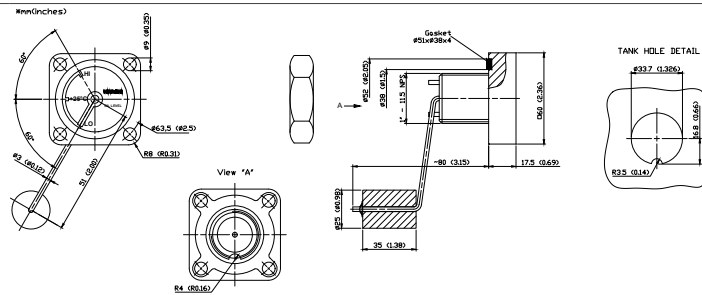
KSS F



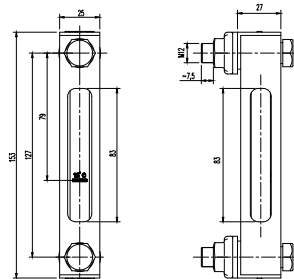
KSS G



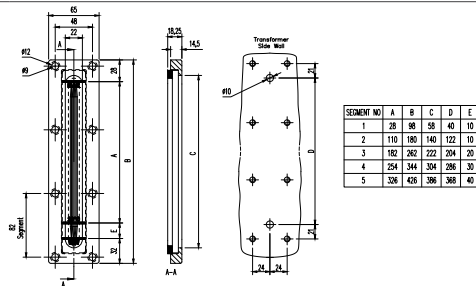
KSS J



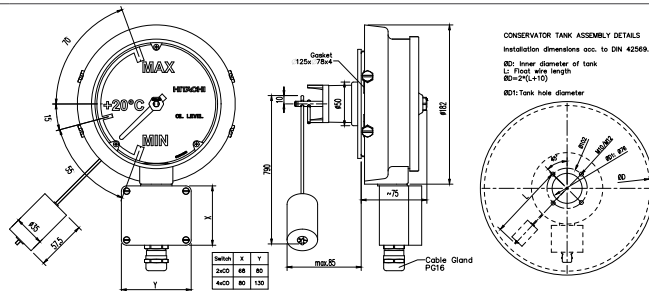
KSS N



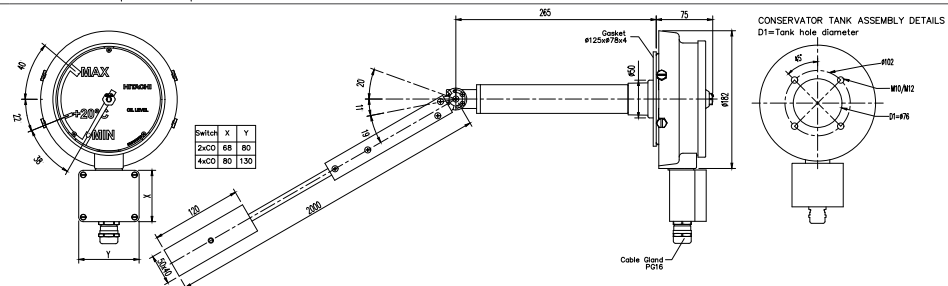
KSS P



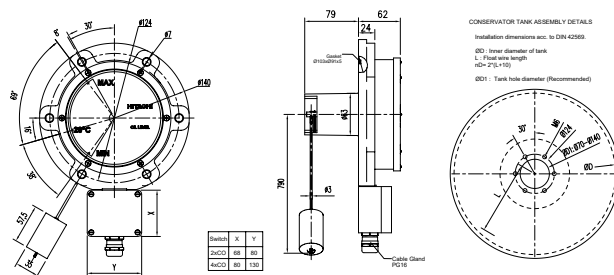
KYS A



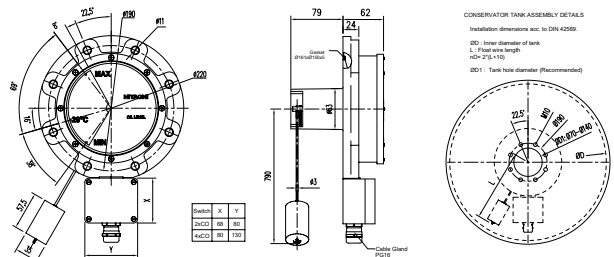
KYS B



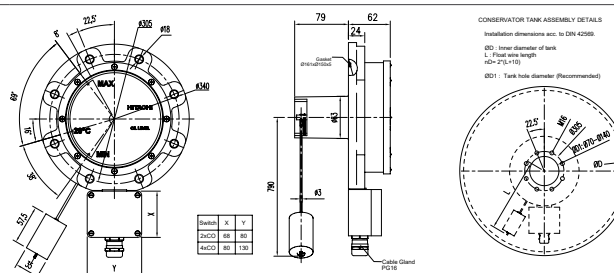
KYS C Ø140



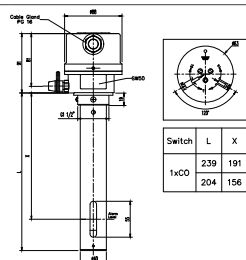
KYS C Ø220



KYS C Ø340



KYS E



Housing	KSS A, B, F, G, J, N, P KYS A, B, C, E	Aluminum casting
	KSS C, D, E	Brass
Color	where applicable	RAL 7033
Sight window	KSS A, B, D, E, F, G, J, P KYS A, B, C	Polycarbonate
	KSS C, N	Glass
Dial type	KSS A, B, F, G, J KYS A, B	Pointer
	KYS C	Circular red&white backgrounds
Dial material	KSS A, B, F, G, J KYS A, B, C	Aluminum sheet
	KSS A	60x60 mm
Outer dimension (mm)	KSS B	80x80 mm
	KSS C	Ø40 mm
	KSS D	SW45
	KSS E	SW60
	KSS F	Ø82 mm
	KSS G	Ø100 mm
	KSS J	60x60 mm
	KYS A, B	Ø182 mm
	KYS C	Ø140, Ø220, Ø340 mm
	KYS E	Ø88 mm

Shaft length	KSS A, B, F, G	308 mm
	KSS D	90 mm
	KSS E	157/210 mm
	KSS J	51 mm
	KSS N	153 mm
	KSS P	98/180/262/344/426 mm
	KYS A, C	790 mm
	KYS B	2000 mm (ETO possible)
Floater type	KYS E	204/239 mm
	where applicable	Foam
	KSS A, B, F, G, J KYS A, C	Radial
Float movement	KSS C, D, E KYS E	Vertical
	KYS B	Axial
Sealing material	KSS A, B, C, D, F, G, J, N KYS A, B, C, E	NBR
	KSS E, P	Cork
	KSS A, B, F, G, J, N, P KYS A, B, C	Transformers with conservator tank
Application	KSS C, D, E, N, P KYS E	Hermetically sealed transformers
	KSS A, B, C, F, G, J, N, P KYS A, B, C	Side mounting
Tank connection	KSS D, E KYS E	Top mounting
	KSS A, B, F, G, J	Ø40 mm
Tank hole diameter	KSS C, D	G1"
	KSS E	G1 ½"
	KYS A, B	Ø76 mm
	KYS C Ø140	Ø70 to Ø82 mm
	KYS C Ø220	Ø70 to Ø140 mm
	KYS C Ø340	Ø70 to Ø140 mm
Protection	KYS E	G1 ½"
	KSS D	with or without
Operation		
Operating oil temperature		-40°C to +110°C
Electrical (for KYS series)		
Switches	KYS A, B, C	2xCO or 4xCO
	KYS E	1xCO
Switch ratings		5A 125VAC
		3A 250 VAC
Cable glands	KYS A, B, C	1xPG16
Environmental		
Ambient temperature		from -40°C up to 80°C
Degree of protection	KYS A, B, C, E	IP65 in accordance with IEC 60529
Corrosion protection		C4 Medium