

# Oil Temperature Indicators

Measure temperature reliably

Monitoring the temperature in a transformer is crucial to diminish aging and allow safe operation.

### Key features

- Our thermometers are fitted with a resettable maximum temperature pointer, which indicates the last highest temperature achieved.
- They can come equipped with up to 2 embedded switches for alarm and control functions (normally open or changeover options).
- All components of our thermometers are surface-treated and corrosion-resistant to survive in the operating environment.
- High contrast and glass dials are available for quick reading.
- Highly customizable options are available on demand.



### Precision and Quality



Each oil temperature indicator is thoroughly tested for accuracy and efficiency before leaving our factory.

- Dimensional control
- Dielectric strength of contacts
- Paint and surface control
- Conformity with customer requirements


### Quick quotes and deliveries

We offer standard prices and quick delivery times for our products listed below. If required, our engineers can also provide customized solutions for your application.

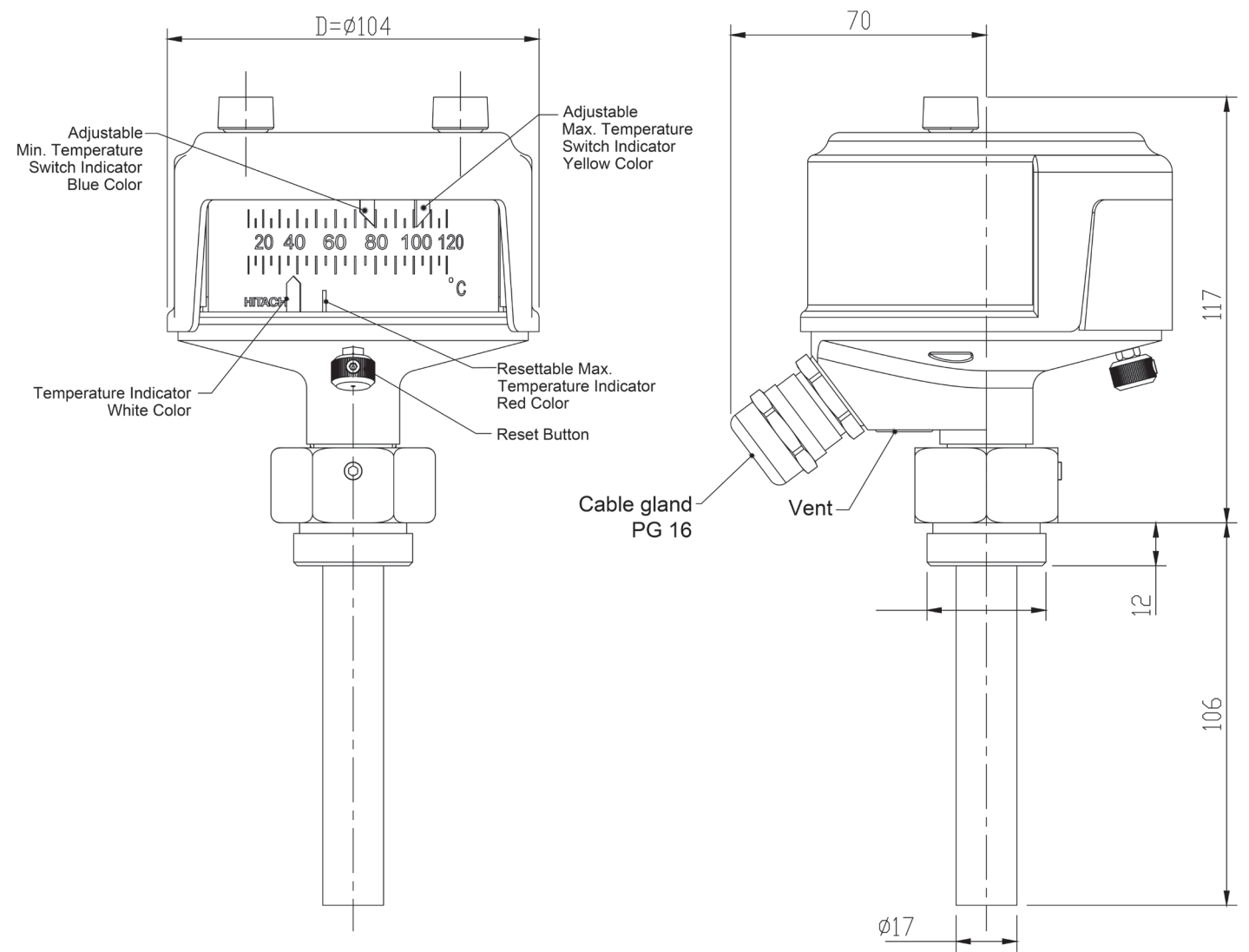
Product information

Product	Type	D mm	Connector A	No. of Switch	Switch Type	Gland	Product Number	Corresponding Pockets		
	Flat Top Mount	Ø104	G ¾"	-	-	-	1ZTE001001D0013	●	or	●
				2	NO	PG16	1ZTE001001D0010	●	or	●
				2	CO	PG16	1ZTE001001D0011	●	or	●
			G 1"	-	-	-	1ZTE001001D0009	●	or	●
				2	NO	PG16	1ZTE001001D0005	●	or	●
				2	CO	PG16	1ZTE001001D0007	●	or	●
	Circular Top Mount	Ø75	G 1"	-	-	-	1ZTE003001D0001	●	or	●
		Ø100	G 1"	-	-	-	1ZTE003001D0003	●	or	●

Refer to the table below for corresponding pockets that meet your specific thermometer requirements.

Product	Type	Connector A	Plug Type	Product Number	Color Legend
	Pocket	G 1"	No plugs	1ZTE004001H0001	●
			Aluminum plug	1ZTE004001H0003	●
		G ¾"	No plugs	1ZTE004001H0002	●
			Brass plug	1ZTE004001H0004	●

TEK Specifications



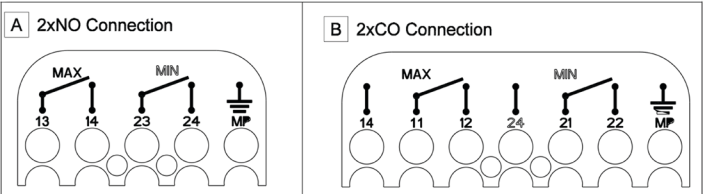
Recommended Maximum Electrical Ratings (Switch Characteristics)

Switch type	Voltage (V)	Resistive Load (A)	Motor Load (A)	Approvals ENEC		Approvals UL	
				A	V	A	V
XCG	250 (AC)	6	2	6 (2)	250 (AC)	5	250 (AC)

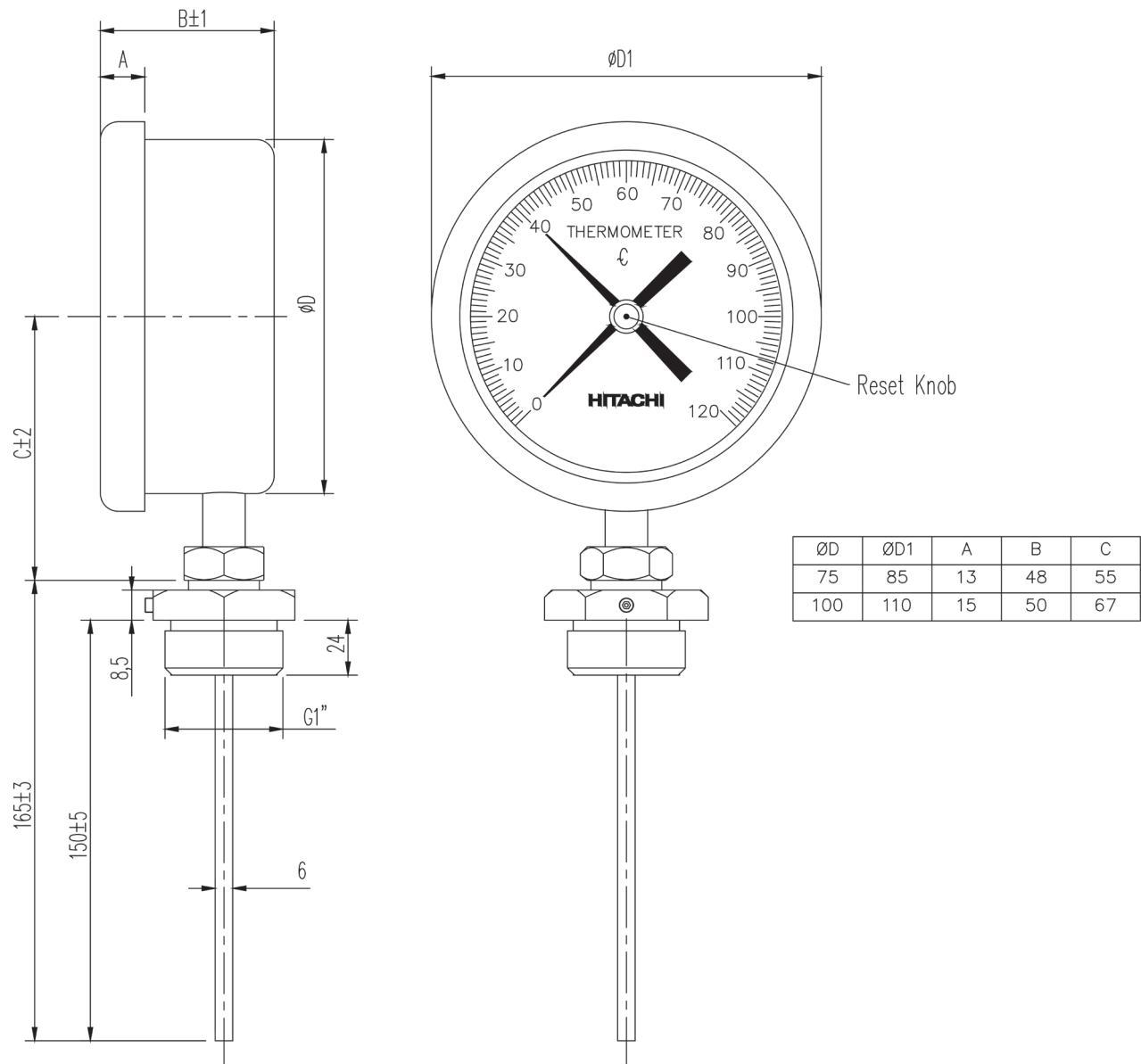
Technical Data

Application	Hermetically sealed or equipped with a conservator
Housing and cover	Aluminum casting with electrostatic powder paint
Mounting	Top mounted
Weight	660 g
Sight glass	UV-resistant, high-transparency polycarbonate
RAL	RAL 7033, others are optional
Degree of protection	IP43, in accordance with IEC 60529
Cable gland	1x PG 16
Tank connection	G1", G¾"
Number of contacts	no contact, 2xCO or 2xNO
Measuring range	+10°C up to +120°C
Ambient temperature	from -40°C up to +80°C
Switching accuracy	±5°C between +50°C and +120°C
Switch rating (AC)	According to UL/CSA 5A at 250 VAC According to ENEC 6(2)A at 250 VAC

Connection Diagram according to EN 50005

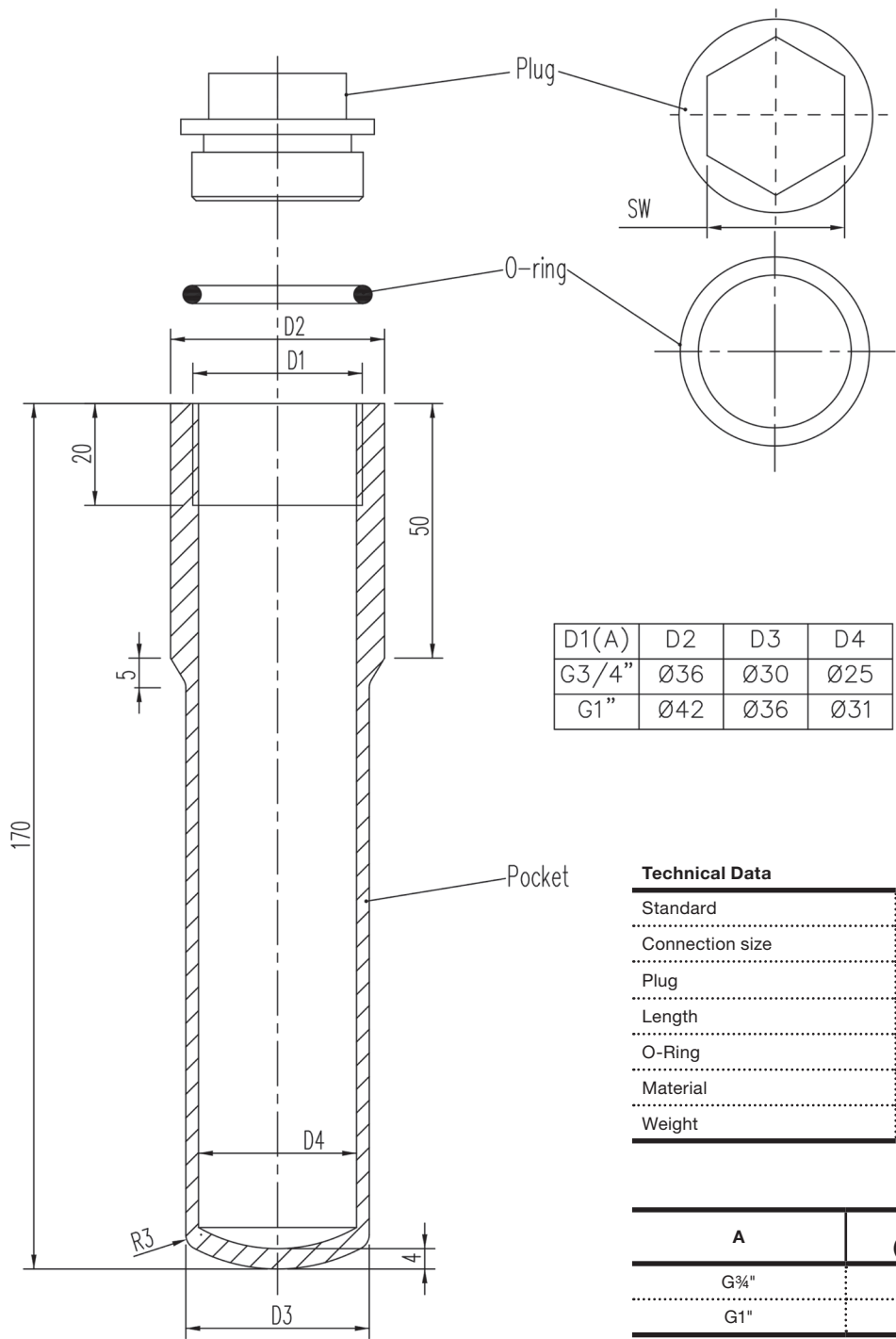


DBT Specifications



Technical Data	
Standard	EN 13190
Housing	Stainless steel
Application	Hermetically sealed or equipped with a conservator tank
Mounting	Top-mounted
Weight	for Ø75: 280 g for Ø100: 370 g
Sight glass	UV-resistant, high-transparency plastic
Tank connection	G1"
Measuring range	0°C up to +120°C
Ambient temperature	from -40°C up to +80°C
Measuring accuracy	1.25% of full scale

Cases Specifications



Technical Data	
Standard	DIN 42554   EN 50216-4
Connection size	G¾", G1"
Plug	with or without
Length	170 mm
O-Ring	NBR (only for "with plug" models)
Material	Steel 11SMn30 (1.1122)
Weight	575 g

A	SW (Wrench Size)	Plug Material
G¾"	22	Brass
G1"	27	Aluminum