

RWK551 SingleTool User Guide

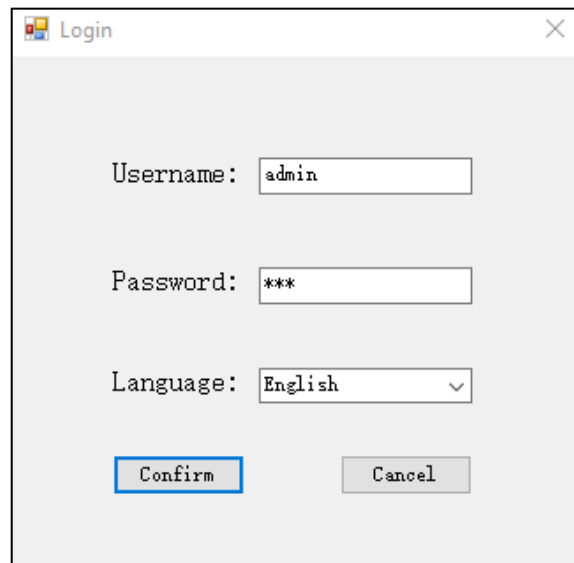
Preparation:

It needs to prepare a computer to connect to PC program.

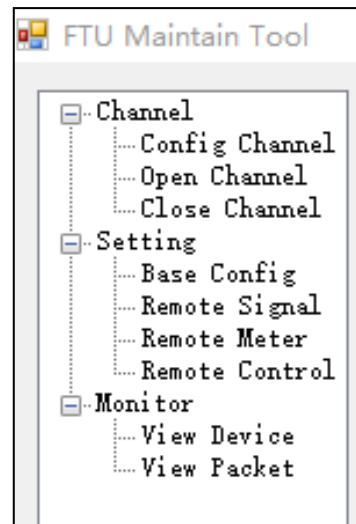
Summary

PC program can set up and operate the device without using the network, particularly suitable for field testing. This software can test each communication protocol automatically, which is convenient for field test communication.

The device supports to log in the stand-alone software through RS485 serial port or RJ45 network port, the PC program does not need to be installed and can be directly open **FTU maintain tool** for use. The username is **admin** by default and the password is **123** by default. You can enter the interface by selecting Chinese and English.



After entering the user name and password correctly, the following screen will appear.



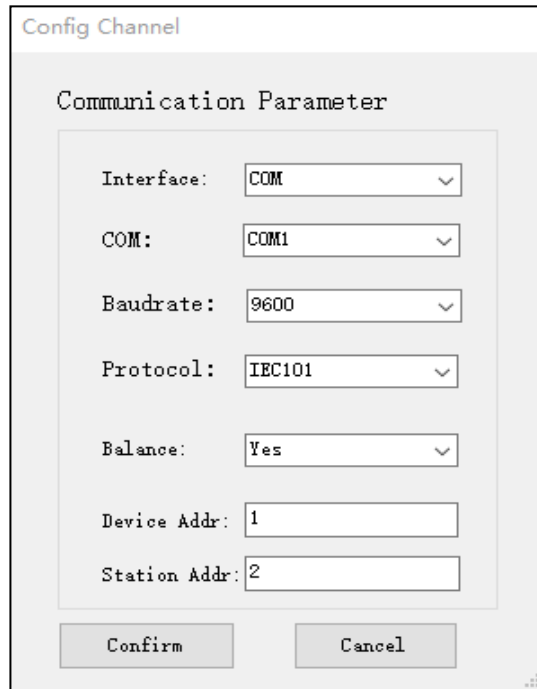
B.1 Channel

Mainly used for opening and closing channels. Double-click **Config Channel**, the following window pops up.

B.1.1 RS485 serial port

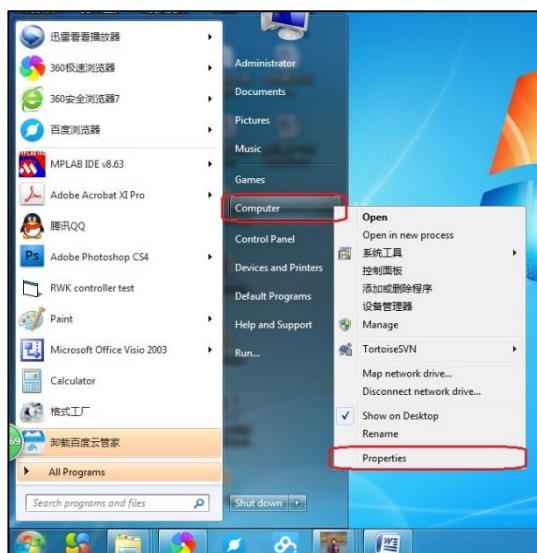
If choose interface to **COM**, you need to select which COM port is connected^①.

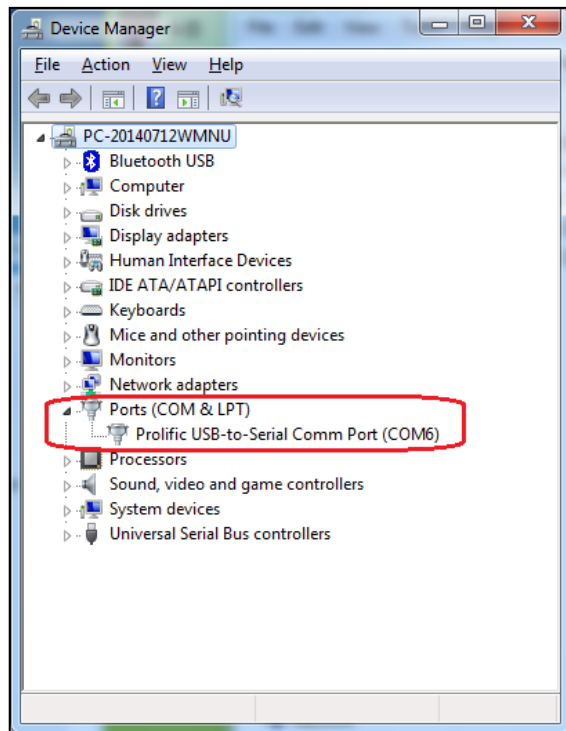
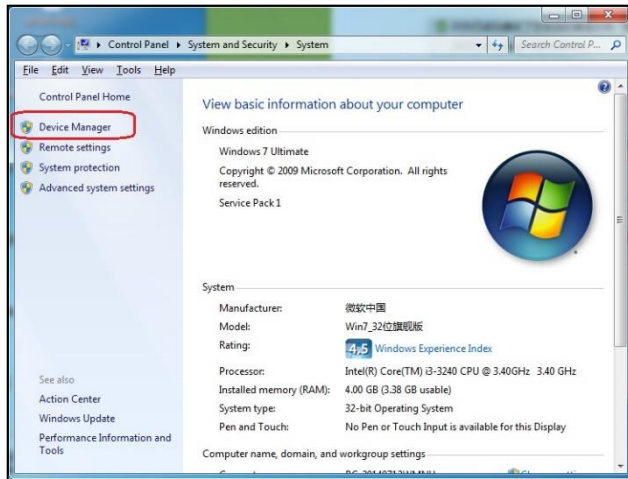
- Baud rate is 9600 by default, no need to modify.
- Protocol can be set to IEC101, IEC104, DNP3.0.
- Balance is set for IEC101, default to balanced mode.
- Device and station address are defaulted.



① How to know which you connect?

Open the menu of your computer, then choose the "Properties" → "Devices Manager" → "Ports". You can see which Communication port you used now.





B.2 Setting

B.2.1 Base config

In this interface, you can set all the communication parameters, the **upload config** used to upload value to device, the **download config** used to download value from device.

Channel Config Channel Open Channel Close Channel Setting Base Config Remote Signal Remote Meter Remote Control Monitor View Device View Packet								
Upload Config Download Config Save Config View Config								
NO.	Name	Curr Value	Modify Value	Unit	Min Value	Max Value	Type	
1	Comm1 Status	1	1		0	1	List	
2	Comm1 Baud	9600	9600		1	38400	Integer	
3	Comm1 Protocol	1	1		1	4	List	
4	Comm1 Balance	1	1		0	1	List	
5	Comm1 Address	1	1		1	65535	Integer	
6	Comm1 Report	0	0		0	65535	Integer	
7	Comm1 Upload	1	1		0	1	List	
8	Comm2 Status	0	0		0	1	List	
9	Comm2 Baud	9600	9600		1	38400	Integer	
10	Comm2 Protocol	1	1		1	4	List	
11	Comm2 Balance	1	1		0	1	List	
12	Comm2 Address	1	1		1	65535	Integer	
13	Comm2 Report	0	0		0	65535	Integer	
14	Comm2 Upload	0	0		0	1	List	
15	Signal type	1	1		1	2	List	
16	Control type	1	1		1	2	List	
17	Meter type	1	1		1	4	List	
18	Address Len	2	2	BYTE	1	2	List	
19	COT Len	2	2	BYTE	1	2	List	
20	I factor	1.00	1.00		0.01	100.00	Float	
21	I deadband	5.0	5.0	A	0.1	1000.0	Float	
22	IO factor	0.10	0.10		0.01	100.00	Float	
23	IO deadband	1.0	1.0	A	0.1	1000.0	Float	
24	V factor	1.00	1.00		0.01	100.00	Float	
25	V deadband	100.0	100.0	V	0.1	1000.0	Float	
26	UO factor	1.00	1.00		0.01	100.00	Float	
27	UO deadband	100.0	100.0	V	0.1	1000.0	Float	
28	P factor	1.00	1.00		0.01	100.00	Float	
29	P deadband	10.0	10.0	KW	0.1	1000.0	Float	
30	COS factor	100.00	100.00		0.01	100.00	Float	
31	COS deadband	0.01	0.01		0.01	1.00	Float	
32	OTH factor	100.00	100.00		0.01	100.00	Float	
33	OTH deadband	0.30	0.30		0.01	1.00	Float	
34	CLASSA	2	2		0	3	List	
35	CLASSB	1	1		0	3	List	
36	Select Timeout	10.0	10.0	S	0.0	30.0	Float	
37	Confirm Link	1	1		0	1	List	
38	Link Retry T...	3	3		0	15	Integer	
39	Link Timeout	20.0	20.0	S	0.0	50.0	Float	
40	Upload Confirm	0	0		0	1	List	
41	Upload Timeout	2.0	2.0	S	0.0	50.0	Float	
42	Upload Retry...	3	3		2	10	Integer	
43	Auto Refresh	0	0		0	1	List	
44	Refresh time	10	10		0	65535	Integer	

B.2.2 Remote Signal, Remote Meter and Remote control

These three interfaces are used to set the point number of communication, click **download config** and then click one project and then click **Add** and you can add related items to the right, at the same time, you can move the location of the project through **before** and **after**, if you don't want this project, click **Delete**, after setting, click **upload config** to upload the data to the device.

