



Rockwell Electric Group



CONTENTS

01

Introduction

02

Products

03

Partners

04

Vision

01 Introduction

Rockwell Electric Group is a high-tech enterprise which was founded in 2000. The factory covers an area of 33,000 square meters. We specializes in developing, manufacturing and marketing power transmission and distribution products.

Rockwell enjoys a worldwide reputation for its superior quality and service. In addition to the domestic market, we have been exported to America, South Asia, Middle East, Africa, Eastern Europe, Central Europe, etc.

We embraces the idea of developing together with customers and are committed to provide users with safer, easier, greener, and more energy-saving medium and high voltage electric equipment and components.



Brief Introduction



Rockwill was founded in 2000. Nowadays Rockwill gained total 4 factories and 1 IM&EX, 1 contracting companies. Turnover more than \$75M at 2024, Business over 79 countries. With KEMA, CE, UL certificates ,....

1.2

Subsidiary Corporation

Business Scope

- **Outdoor Switch & Breaker, Switchgear Components, GIS, Substation & Panel.**
- **Distribution Automation System & Software, Relay Protection, Controller of Distribution Automation Units(Recloser, Smart Transformer, Voltage Regulator, Load Break Switch, etc.)**
- **Power Transformer, High Voltage Breaker, Operating Mechanism.**
- **Manufacturing operating mechanism for Power Distribution Equipment like Recloser, Load Break Switch and Voltage Regulator, etc.**
- **Supplying and Gathering Whole Solutions includes Designing, Manufacturing, Engineering, Constructing, Commissioning, and Financing Service.**



WENZHOU ROCKWILL ELECTRIC



ZHEJIANG ROCKWILL GROUP



ZHEJIANG VZIMAN POWERTECH

ZHEJIANG VZIMAN GROUP

1.3

Factory Pictures



Switchgear Workshop



Headquarter



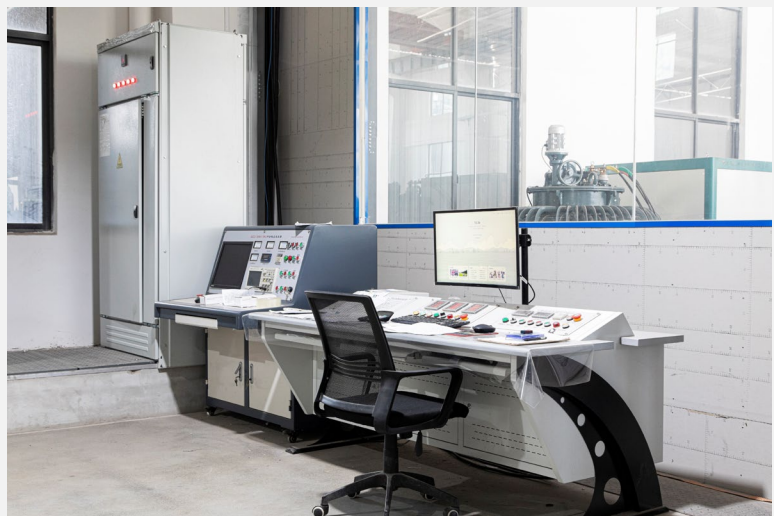
Indoor VCB Workshop



Indoor LBS Workshop



Transformer Workshop



Test Laboratory

1.4

Factory Pictures



Insulating Part Workshop



Outdoor LBS Workshop




Outdoor Recloser Workshop



Outdoor SF6 CB Workshop

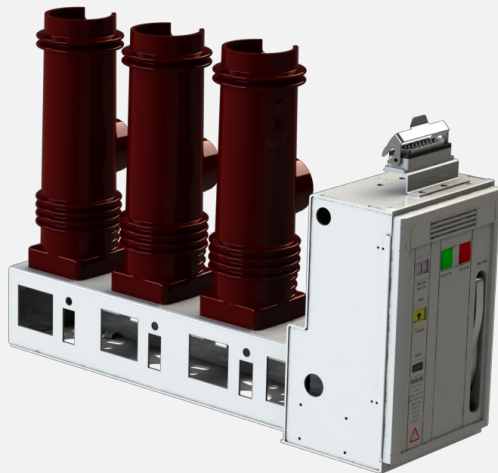
02 Products



- **Outdoor switchgear-Outdoor SF6 circuit breaker-Automatic circuit recloser-On load break switch-Automatic Sectionalizer-Outdoor vacuum circuit breaker-Capacitor switch solutions-Solid vacuum load break switch**
 - **Medium voltage switchgear- Air insulated switchgear- Gas insulated switchgear-Solid ring main unit -Ring main unit**
 - **Switchgear components: Vacuum circuit breaker-SF6 load break switch-SF6 circuit breaker-Earth switch-Current/Voltage transformer-Bulk metering unit**
 - **Power transformer and Distribution transformer - Step voltage regulator-Prefabricated substation**
 - **Solutions for power and grid-Substation works -distribution line works-Small power plant-Smart grid system solutions**
- 

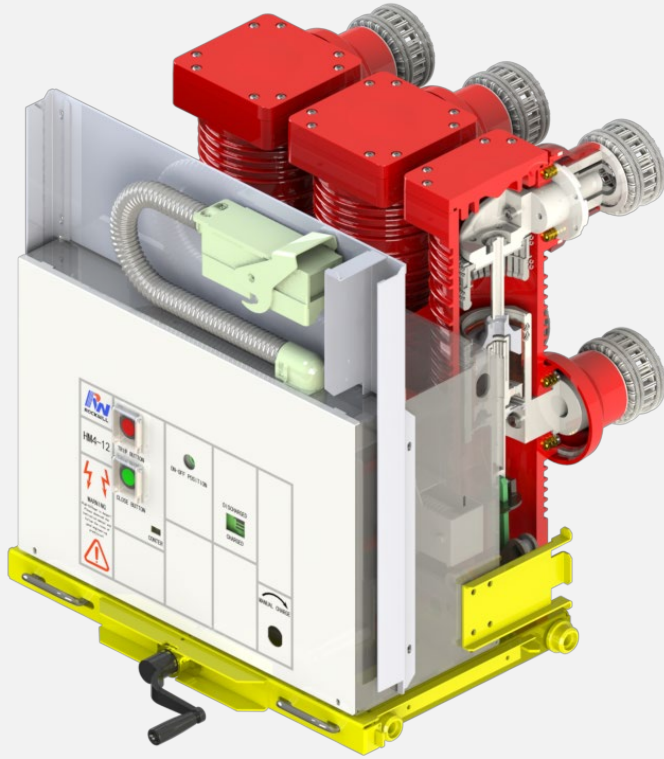
2.1

Indoor Vacuum Circuit Breaker



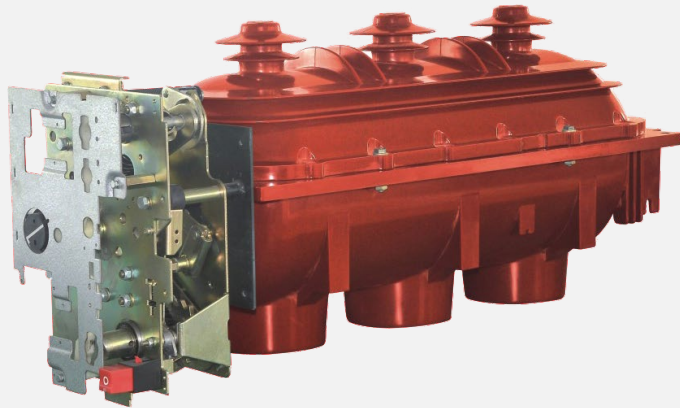
- Indoor type Vacuum Circuit Breaker tested as per IEC62271-100 standard.
- $U_r=11\text{kV}$ up to 40.5kV
 $I_r=630\text{A}$ up to 4000A ,
 $I_{sc}=12.5\text{kA}$ up to 40kA at 50/60Hz
Phase distance: 150mm/210mm/275mm
- Fixed and withdrawable type;
- Frontal and lateral type
- Used in metal clad switchgear, AIS Ring Main Unit.

Indoor SF6 Circuit Breaker



- Indoor type HM4-SF6 Circuit Breaker tested as per IEC62271-100 standard.
- $U_r=11\text{kV}$ up to 40.5kV
 $I_r= 630\text{A}$ up to 3600A
 $I_{sc}=12.5\text{kA}$ up to 50kA at 50/60Hz,
Phase distance: $150\text{mm}/210\text{mm}/275\text{mm}/350\text{mm}$
- Fixed and withdrawable type;
- Frontal and lateral type
- Used in metal clad switchgear

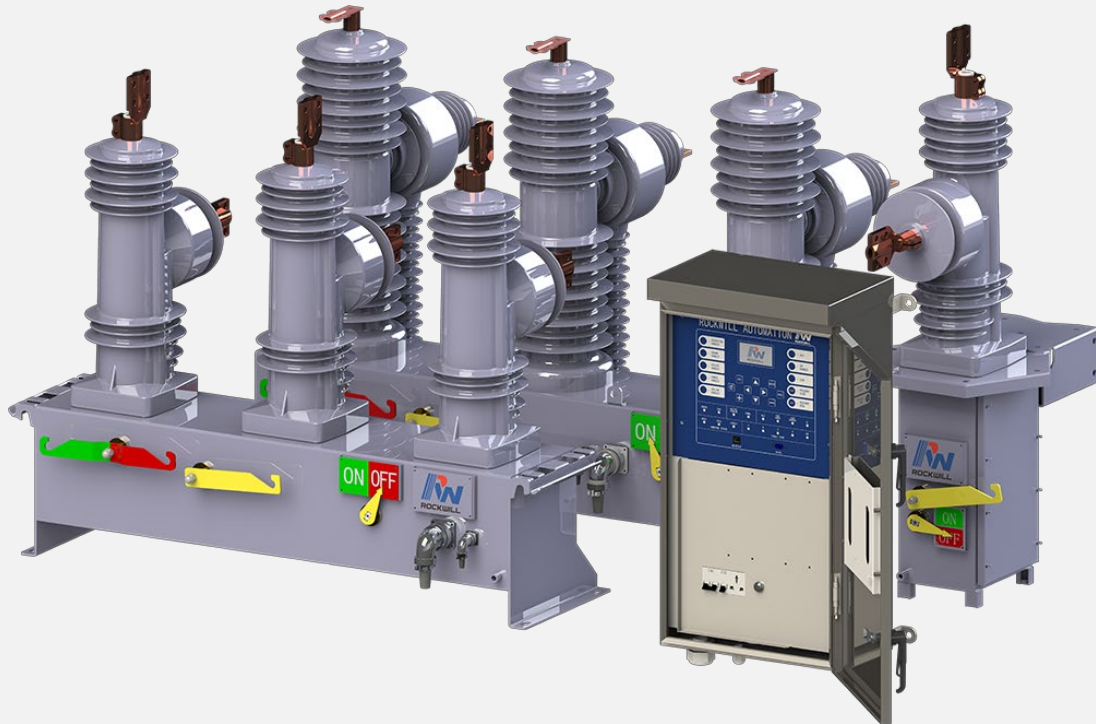
Indoor SF6 Load Break Switch



- Indoor type RLS-SF6 Load break switch tested as Per IEC62271-102 standard.
- $U_r=11\text{kV}$ up to 40.5kV ,
 $I_r=630\text{A}$,
 $I_{sc}=12.5\text{kA}$ up to 20kA at 50/60Hz,
Phase distance: 200mm/210mm/275mm/350mm
- Operation: Manual/Motor with different accessories.
- Motor voltage:DC24V/48V/110V/220V
- Application: used in ring main unit

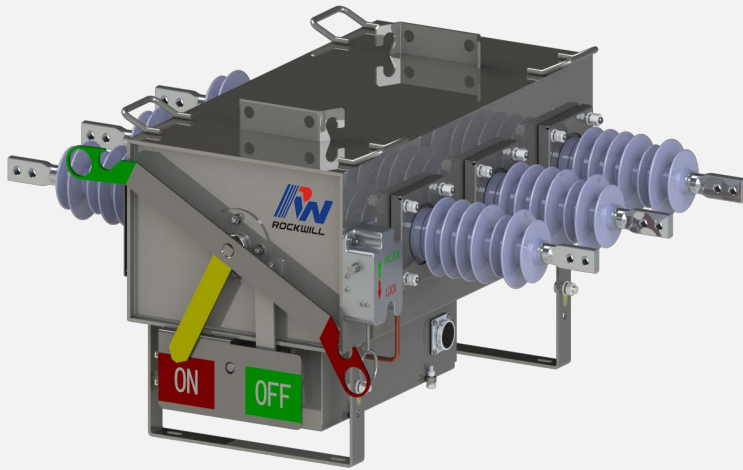
2.4

Auto Recloser



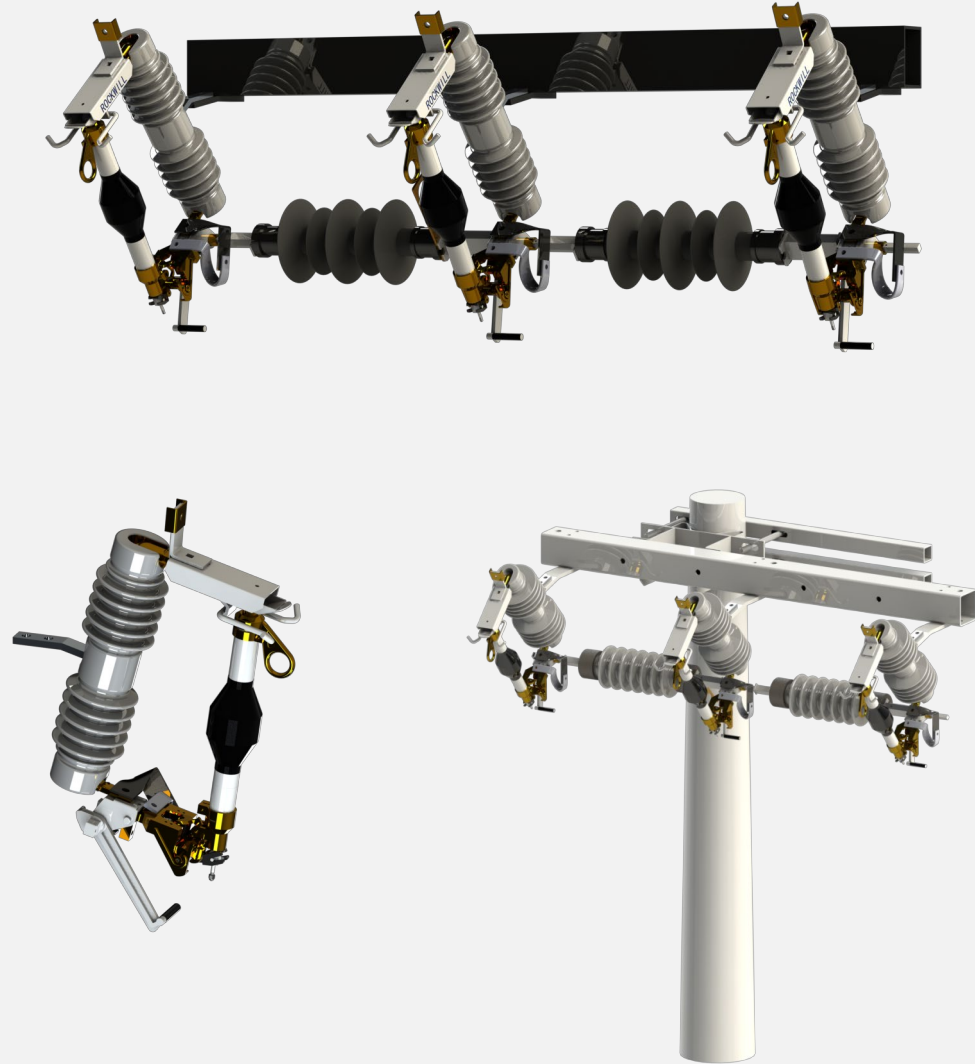
- RCW-Auto Recloser KEMA type tested as Per IEEE C37.60/IEC62271-111 standard.
- $U_r=11\text{kV}$ up to 38kV
- $I_r= 630\text{A}$ up to 1250A
- $I_{sc}=12.5\text{kA}$ up to 25kA at $50/60\text{Hz}$
- Ready for SCADA communication protocol: IEC 61870-5-101,104, DNP3.0,Modbus,IEC61850,etc.
- With Software APP for personal mobile management- Micro Smart Grid App.

Outdoor SF6 Load Break Switch



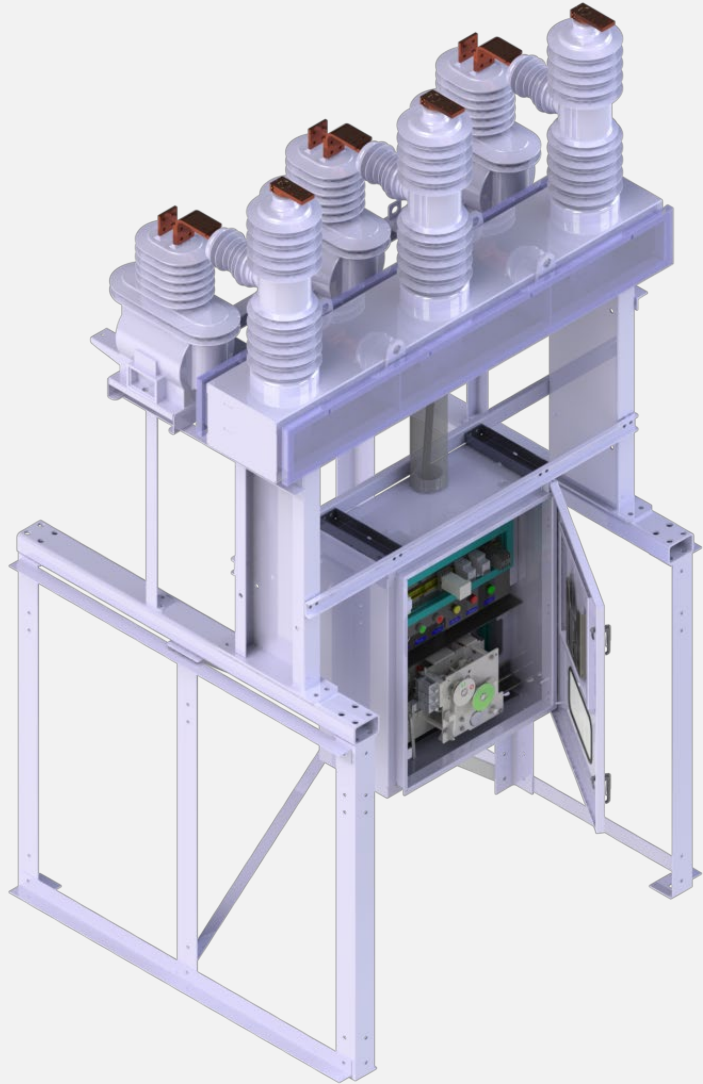
- The RPS-SF6 Load Break Switch KEMA type tested as per IEC62271-103 standard.
- $U_r=11\text{kV}$ up to 38kV
 $I_r=400\text{A}$ up to 630A
 $I_k=12.5\text{kA}$ up to 25kA at $50/60\text{Hz}$
- Ready for SCADA communication protocol: IEC 61870-5-101,104, DNP3.0,Modbus,IEC61850,etc.
- With Software APP for personal mobile management- Micro Smart Grid App.

Dropout Sectionalizer



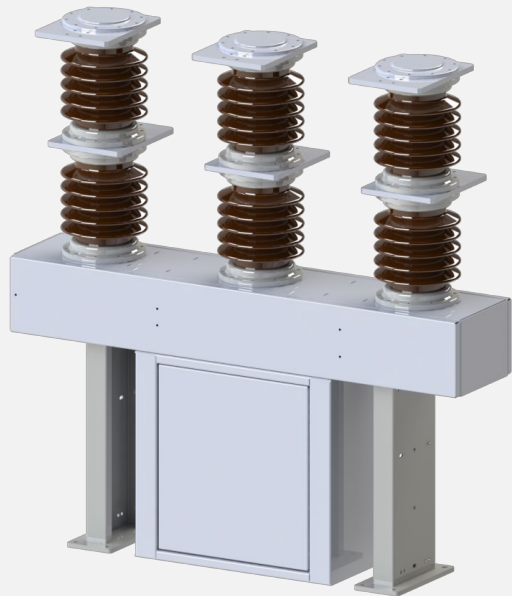
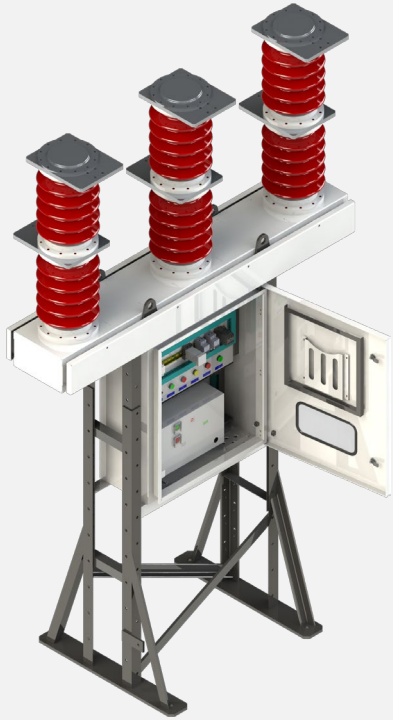
- The RDK-Auto sectionalizer tested as per IEC62271-103 standard.
- $U_r=11\sim40.5\text{kV}$,
- $I_r=200\text{A}$,
- $I_{sc}=16\text{kA}/20\text{kA}$ at 50/60Hz.
- Installed on distribution overhead line to isolate fault section. It allows the upstream recloser/breaker to clear the fault without interrupting the circuit
- Ready for gang operated by WIFI.

Vacuum Circuit Breaker



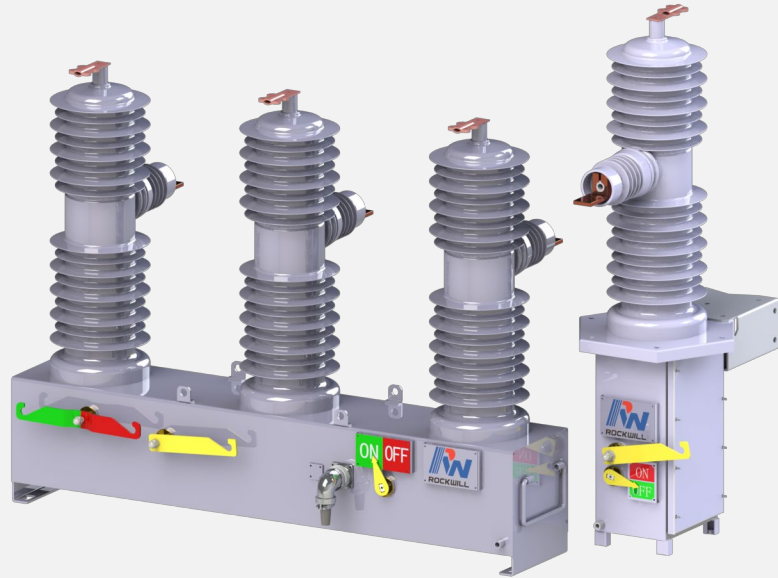
- The RVB-Outdoor Vacuum Circuit Breaker is tested as per IEC62271-100 standard.
- $U_r=12\sim36\text{kV}$
 $I_r=630\text{A}\sim2500\text{A}$
 $I_{sc}=25\text{kA}/31.5\text{kA}/40\text{kA}$ at 50/60Hz.
- Designed for different primacy options: Standard type and special type with CT for relay protection and current measuring purpose.

SF6 Circuit Breaker



- The RHB-SF6 Circuit Breaker tested as per IEC62271-103 standard.
- $U_r=12\sim40.5\text{kV}$
 $I_r=630\text{A}\sim2500\text{A}$
 $I_{sc}=25\text{kA}/31.5\text{kA}$ at 50/60Hz
- Used in power distribution for control and protection of lines, transformers, rectifier units, capacitor banks, etc.
- Due to the SF6 autopuffer breaking technique, the SF6 circuit-breakers do not generate overvoltage during switching

Capswitch



- The RCS capswitch is complied with IEEE/ANSI C37.66.
- $U_r=15\text{kV}/27\text{kV}$ for single phase
 38kV for three phase at 50/60Hz.
- Advantage for substantial savings from reducing maintenance and maximized bank uptime and will also improve Power Quality.
- RS-232/RS-485 ports supporting. Modbus communication protocol support (GPRS/GSM wireless control).

Metal Clad AIS Switchgear



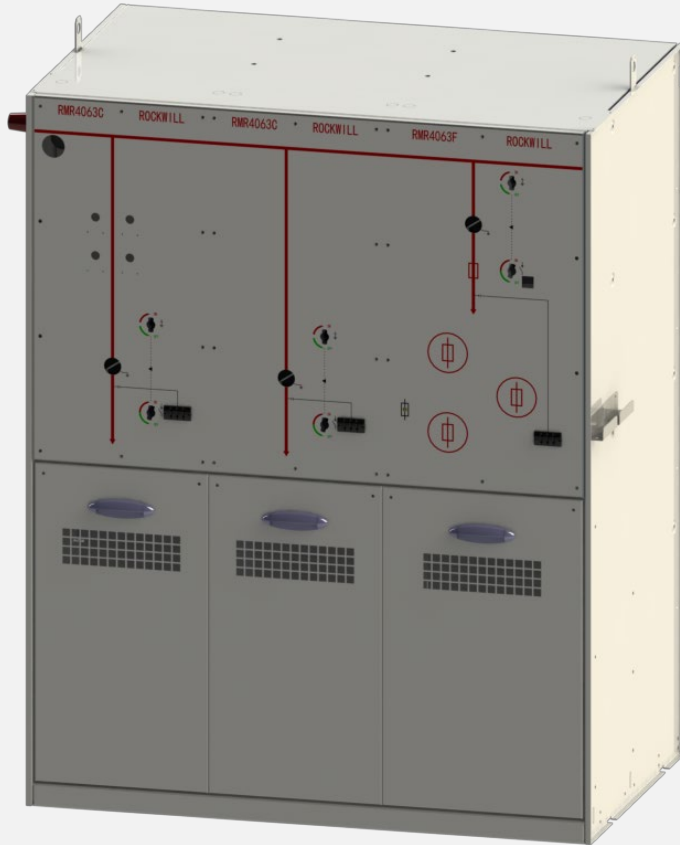
- The KYN28 & KYN61 Metal clad switchgears are type tested by CNAS which is in conformity with the standards of IEC62271-200.
- $U_r=12/24/36\text{kV}$
 $I_r=630\sim 3150\text{A}$
 $BIL=75/95\text{kV}/170\text{kV}$ at 50/60Hz power system
- Fitted with optional isolator/PT/Fuse truck etc...
- Mainly used for the transmission and distribution of electrical power and control, protection, monitoring of the circuit.

Gas Insulated Switchgear



- The Gas insulated switchgears are type tested by CNAS which is in conformity with the standards of IEC62271-200.
- $U_r=12/24/40.5\text{kV}$
 $I_r=630\sim3150\text{A}$
 $I_{sc}=12.5\text{kA}$ up to 40.5kA
 $BIL=75/125\text{kV}/185\text{kV}$ at 50/60Hz power system
- Fitted with vacuum circuit breaker, 3-position disconnector, busbar connection device...
- The GIS has so many advantages, such as compact size and space saving, high reliability and maintenance-free operation, high safety and easy installation.

Ring Main Unit



- The RMR SF6 Insulated Ring Main Unit is type tested by CE and CNAS. It is in conformity with the standards of IEC62271-200.
- $U_r=12/24/36\text{kV}$
 $I_r=630/1250\text{A}$
 $BIL=75/95/170\text{kV}$
- RMR can be supplied in 10 different configurations suitable for most switching applications in 12/24/36 kV distribution networks.

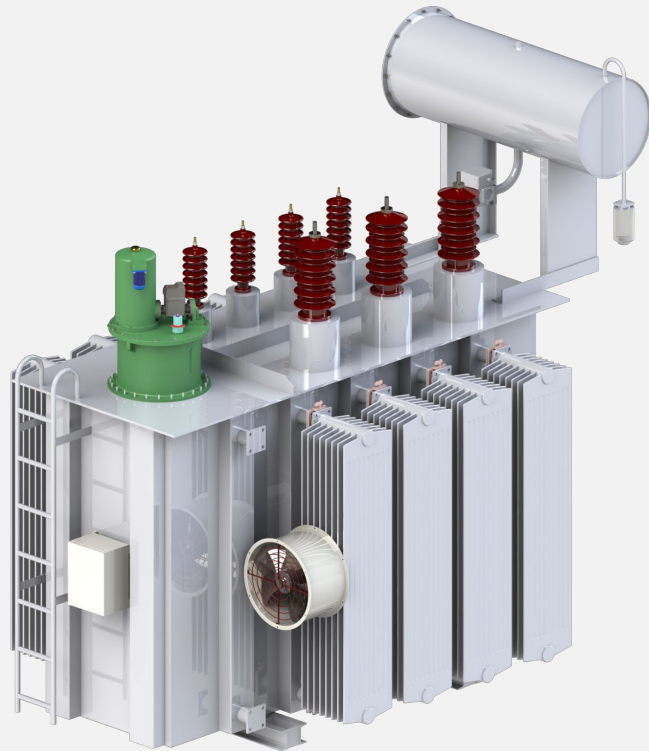
Low Voltage Panel



- The low voltage panel is in conformity with the standards of IEC439.
- Different types can be customized by clients' requirement.
- Component brand is CHINT and other well-known domestic supplier.

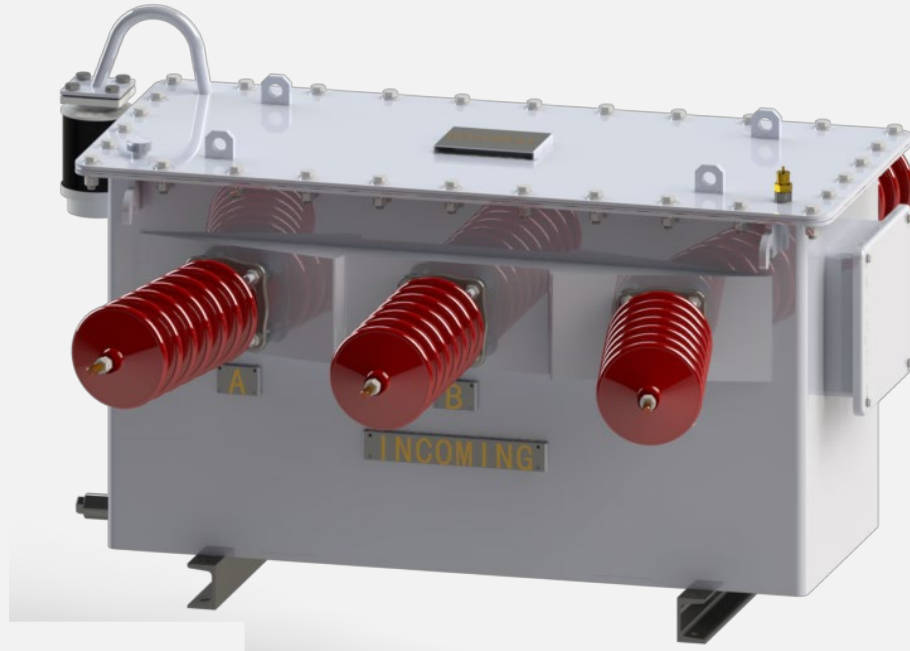
2.14

Voltage Regulator



- The RVR voltage regulator is type tested by CNAS.
- $U_r=2.4\text{kV}$ (60 kV BIL) up to 34.5kV (200 kV BIL) for 50/60Hz.
- Ready for SCADA communication protocol: IEC 61870-5-101, 104, DNP3.0, Modbus, IEC61850, etc.
- With Software APP for personal mobile management- Micro Smart Grid App.

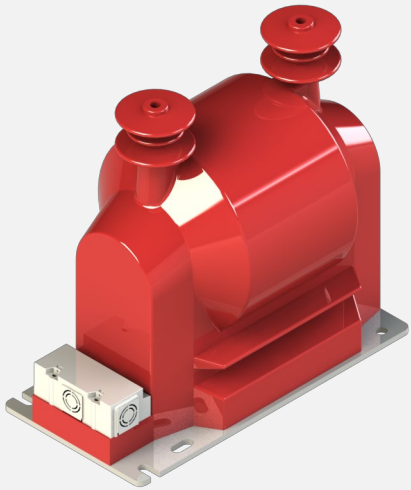
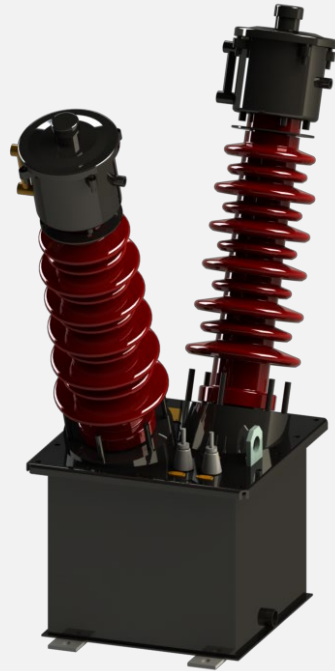
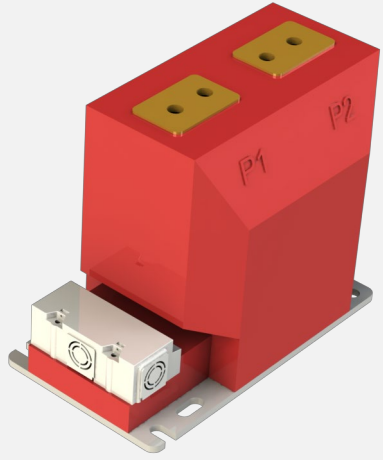
Metering Outfit



- The RBM metering unit is complied with IEC60044-3.
- $U_r=11\text{kV}, 33\text{kV}$ at 50/60Hz power system.
- CT and VT combined and assembly together.
- Meter box can be placed in downstream of the metering outfit to measure the energy.
- Suitable for pole mounted

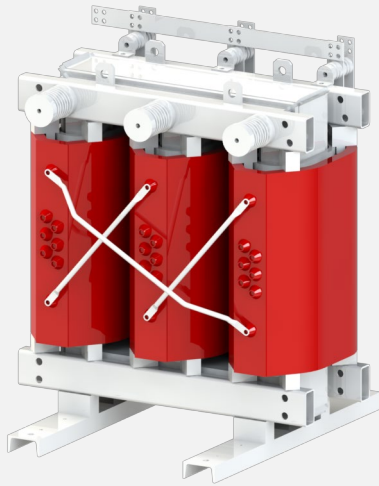
2.16

CT & VT



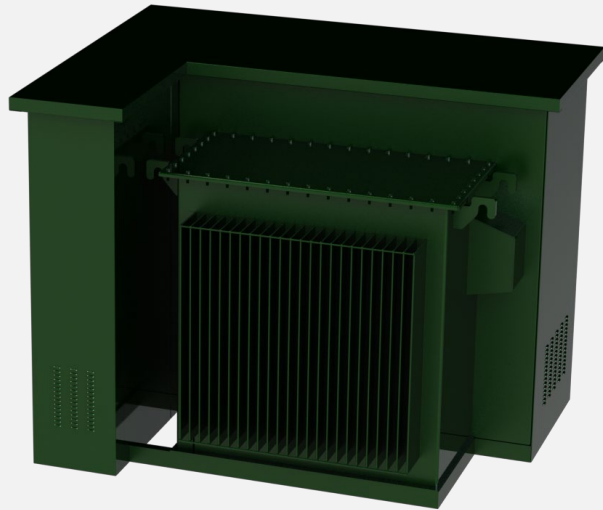
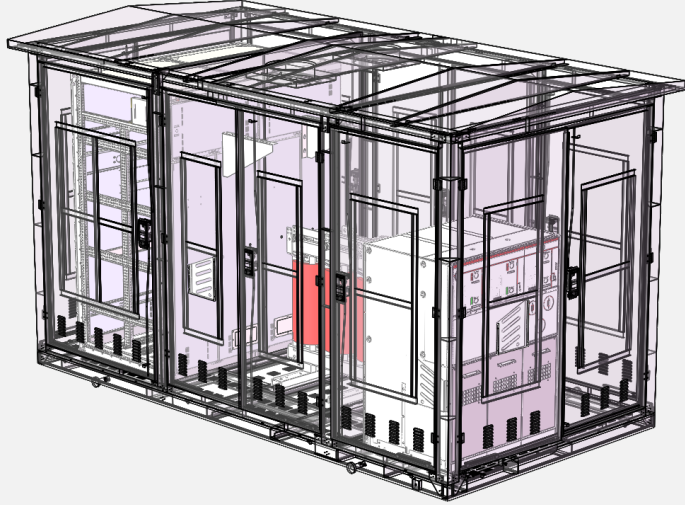
- The Current transformer and Voltage transformer are complied with IEC 60044.
- $U_r=12\text{kV}\sim 36\text{kV}$ at power system 50/60Hz.
- Type: dry type, oil immersed type
- Application: Indoor/Outdoor
- To facilitate measurement/protection/ control, it needs to be converted into a relatively uniform current/voltage

Transformer



- The transformer is type tested by CE and CNAS. It is in conformity with the standards of IEC60076.
- Type: cast resin, oil immersed, smart transformer
- Application: Transmit electrical energy, change voltage
- Suitable for pole mounted

Compact Substation

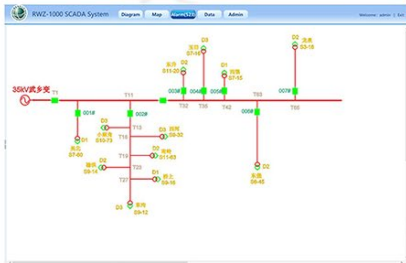
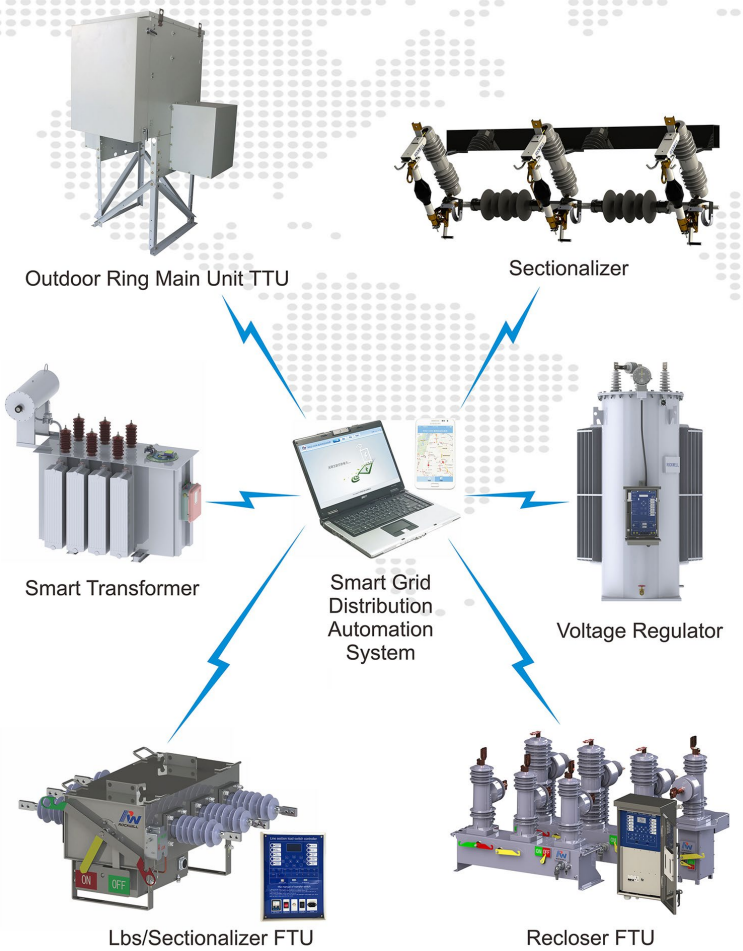


- The Compact Substation is type tested by CE and CNAS. It is in conformity with the standards of IEC60076.
- Equipment that integrates the MV switchgear, transformer, LV distribution equipment together.
- Advantages: Loop network power supply, high reliability, saving investment, compact area

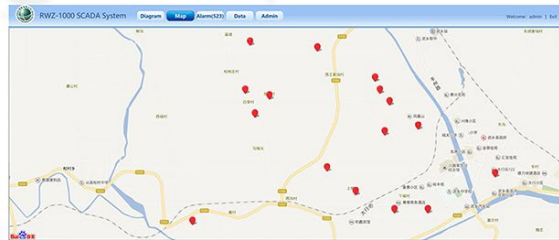
2.19

SCADA System

The SCADA system mainly collects real-time data of switches distributed at each responsibility Demarcation point in the distribution network to realize real-time monitoring of power grid operation. In addition, the supporting mobile client software can check or manage the power grid anytime and anywhere, improving the level of automatic management and power supply quality.

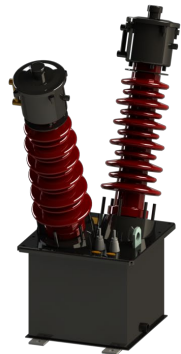
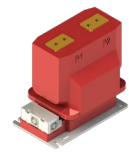
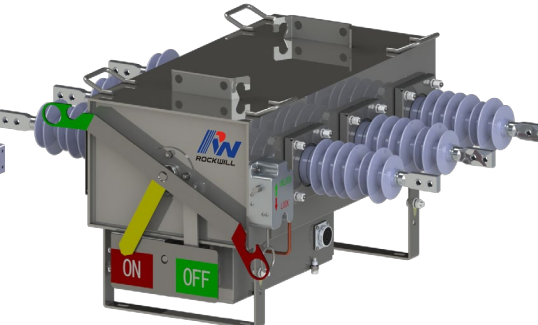
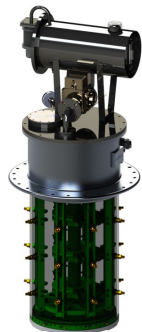
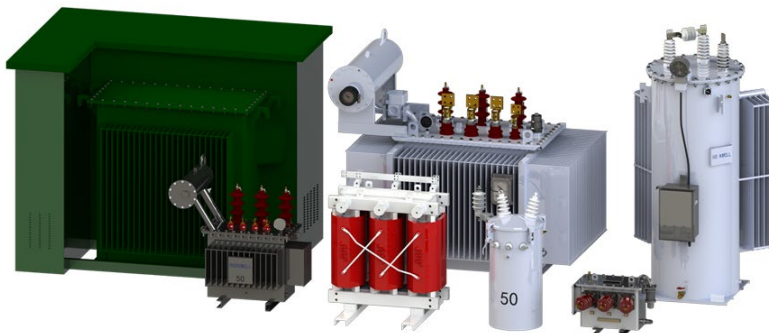
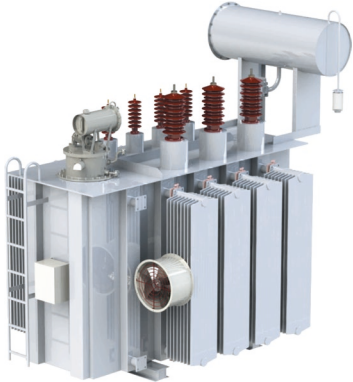


ID	Name	Part name	Date	Status
1	101000000000	Recloser	2008-07-01 00:00	Operational
2	101000000000	Recloser	2008-07-01 00:00	Operational
3	101000000000	Recloser	2008-07-01 00:00	Operational
4	101000000000	Recloser	2008-07-01 00:00	Operational
5	101000000000	Recloser	2008-07-01 00:00	Operational
6	101000000000	Recloser	2008-07-01 00:00	Operational
7	101000000000	Recloser	2008-07-01 00:00	Operational
8	101000000000	Recloser	2008-07-01 00:00	Operational
9	101000000000	Recloser	2008-07-01 00:00	Operational
10	101000000000	Recloser	2008-07-01 00:00	Operational
11	101000000000	Recloser	2008-07-01 00:00	Operational
12	101000000000	Recloser	2008-07-01 00:00	Operational
13	101000000000	Recloser	2008-07-01 00:00	Operational
14	101000000000	Recloser	2008-07-01 00:00	Operational
15	101000000000	Recloser	2008-07-01 00:00	Operational
16	101000000000	Recloser	2008-07-01 00:00	Operational
17	101000000000	Recloser	2008-07-01 00:00	Operational
18	101000000000	Recloser	2008-07-01 00:00	Operational
19	101000000000	Recloser	2008-07-01 00:00	Operational
20	101000000000	Recloser	2008-07-01 00:00	Operational



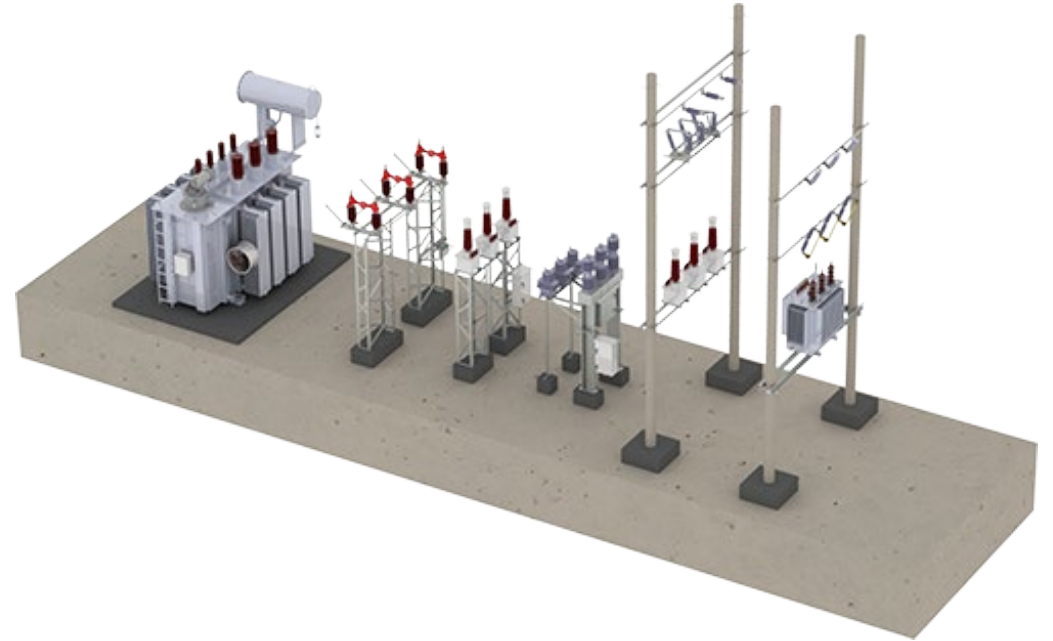
2.20

General Products



Substation

Substation consist of power transformer, switchgear, high voltage equipment, low voltage panel etc....



Advantages

Localization Brand

Many cooperation options for boost your business success by a Localization partnership way on : Production line Build, Joint venture factory, Assembly line build, etc.. Win future

Quality Control

Own design half automation production line and ISO quality control system, Which products has own ID for information tracking.



R&D Capability

Rockwill gained many patent products on AUTO recloser, load break switch, ring main unit and distribution automation solutions.

Services

Quick response in 12 hours. Train and build local service team. Rockwill policy is every agent or representative is responsibility for aftersales and technical service.

03 Partners

- K-Electric Pakistan
- NTDC Pakistan
- BREB Bangladesh
- BPDB Bangladesh
- EAC Cambodia
- EDC Cambodia
- CEB Sri Lanka
- KenGen Kenya
- KPLC Kenya

- KEPCO South Korea
- NEA Nepal
- SEC Saudi
- PLN Indonesia
- Power Grid India
- NGCP Philippines
- MEA Thailand
- PEA Thailand

- Tanesco Tanzania
- EVN Vietnam
- EEHC Egypt
- EETC Egypt
- EEP Ethiopia
- BPC Botswana
- SNE Congo
- ECG Ghana
- Eskom South Africa
- DABS Afghanistan

.....

Business Area

Countries

- Indonesia
- Philippines
- Brazil
- Ethiopia
- South Africa
- Tanzania
- Congo
- Yemen
- Kenya
- Cameroon
- Zimbabwe
-

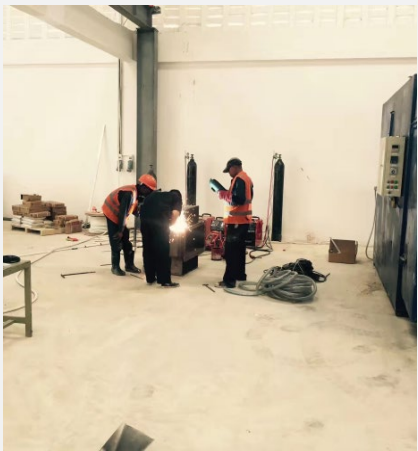
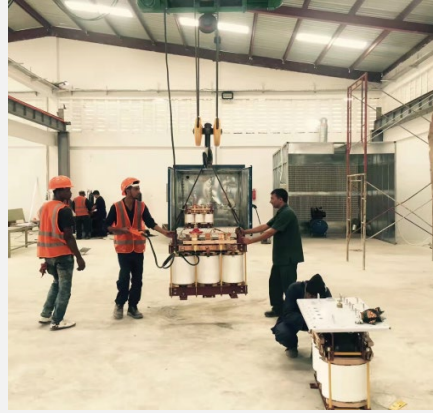


World Distribution

3.2

Overseas Joint Venture Factory

- **Establish JV transformer factory in Tanzania**



3.3

Overseas Joint Venture Factory

- **Establish JV the Africa Biggest Manufacturing Factory of Insulator, Fuse Cutout, Surge Arrester**



3.4

Project Cases

- Pakistan -Substation -2016



Project Cases

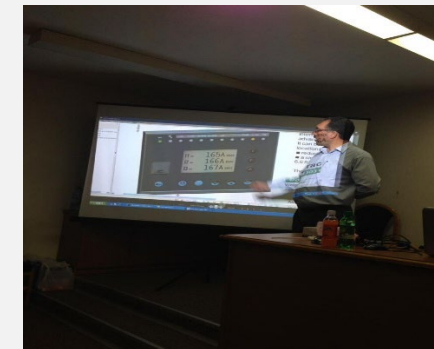
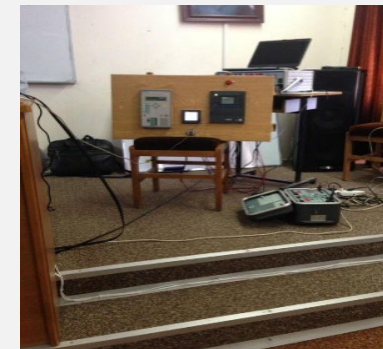
- **110kV Substation Completed in Afghanistan-2018**



3.6

Project Cases

- **Supply of 66kV Line Protection Panels & 6.6kV High Voltage and Control Panels-2018**



Project Cases

- **Distributed Photovoltaic Power Station**



Project Cases

- **Addis Ababa Transmission and Distribution System Rehabilitation and Upgrading Project ETHIOPIA-2022**



Project Cases

- **Installation of Frequency Converter at Wafra Joint Operations at Kuwait-2023**



3.10

Project Cases

- **Grid Connection of the 16.8MWp
Rooftop Solar PV on the LMI Mega Warehouse in Tema, Ghana-2023**



3.11

Project Cases

- **10MW Offshore Photovoltaic Boost Grid Connected System in Male, Maldives-2023**



Project Cases

- **UN POSTE DE REGLAGE 5 MVA-36/33 kV A TSHIBWE ET D'UNE LIGNE DE TRANSPORT 36 kV – 38 km TSHIBWE –MBUJI-MAYI ET DE LA SOUS-STATION 36/15 KV – 5 MVA DE BIPEMBA ET ELECTRIFICATION DES CITES DE BOYA, MIABI ET LUSANGA 36 kV – 38 km TSHIBWE at DRC-2024**





Clients from Bree



Clients at the Rockwill Headquarter



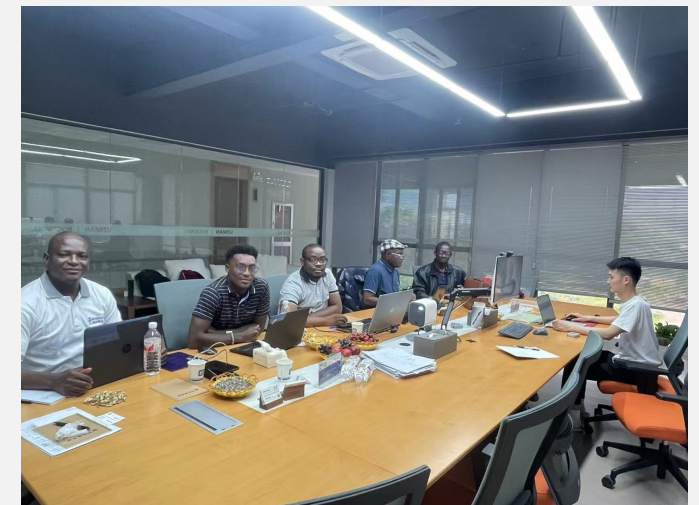
Clients from Myanmar



Clients from Tanelec and REA



Rockwill Annual Conference



Clients from Cameroon

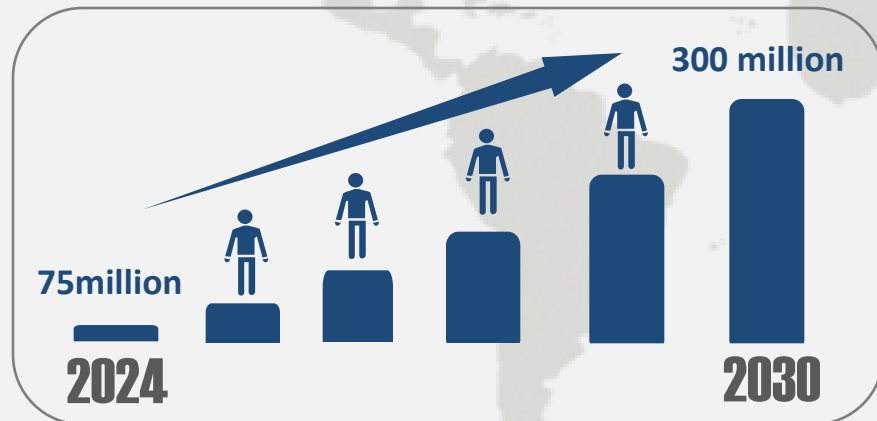
3.14

FAT



04 Vision

Latest Target: Annual turnover reach 300 million in 2030.



In order to achieve this goals, we have to maintain a compound annual growth rate of 32%, so we take a series of measures to get it!



4.1

Rockwill Latest Five-Year Plan 2026-2030

R&D

We will spend at least 20% of our profits on upgrading our products and developing new products every year.

Production

**Refine production process to improve productivity.
Improving product quality control and delivery time control.**

Partner

Establish a professional training system for our partners.

Market

**85% Market share of Switchgear in Indonesia.
95% Market share of Transformer in Tanzania
We are all here for MEE Exhibition and Caton Fair every year**

4.2

Vision

**Rockwell boost you success!
With better solutions for your Quality Power
and your business!**





Thank You!

www.cnrockwill.com