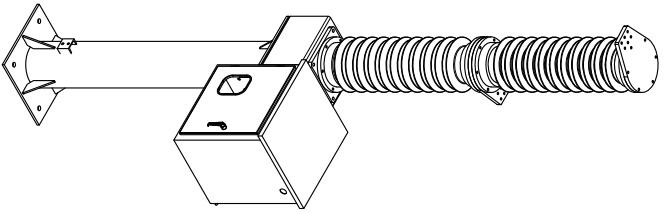
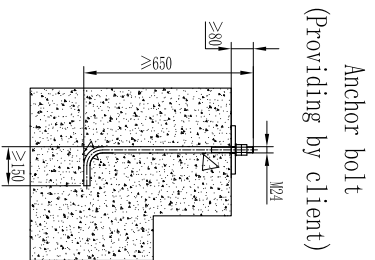
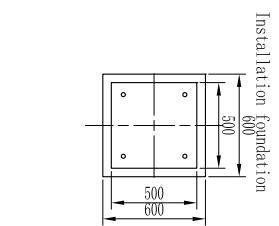
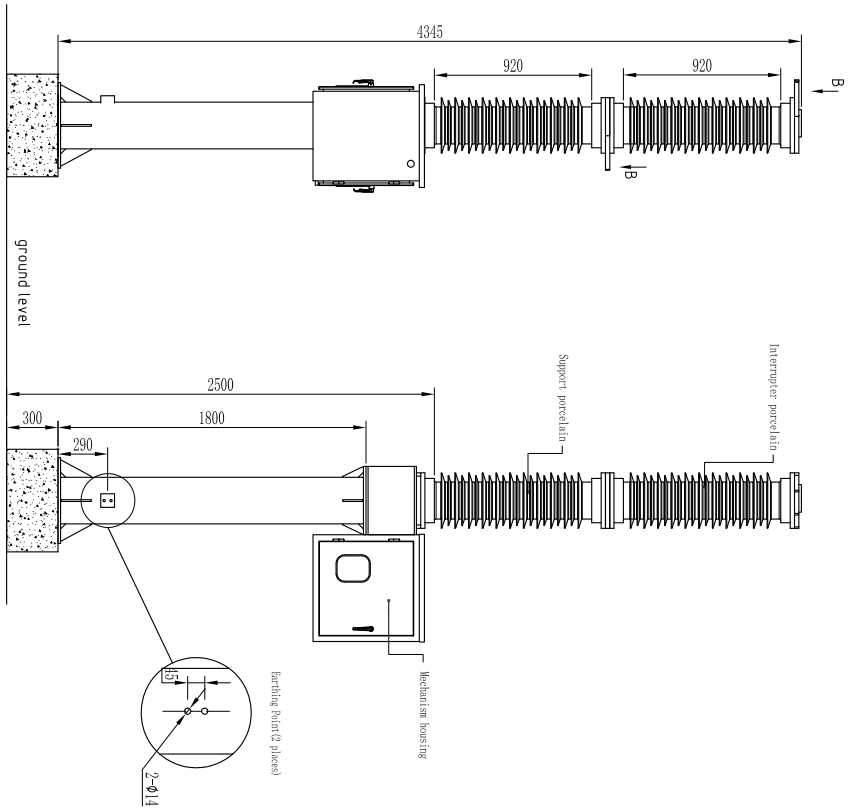
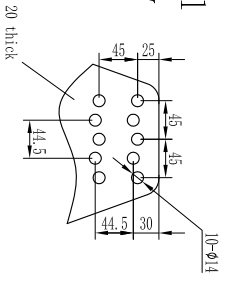


DRAWING IS SUBMITTED TO FOR:
 NEW APPROVAL
 RE-APPROVAL
 FOR PRODUCTION
 DRAWING NO. DATE

- NOTE:
- 1)、Foundation static load: 5600N
Foundation dynamic load:
horizontal direction: 4000N
Vertical direction (upward): 10000N, including self weight
 - 2)、The height difference of the foundation shall not exceed 2mm
The levelness of each base surface shall not exceed 2mm
 - 3)、Weight: 560KG
 - 4)、Package size 1 : 2600x480x480 (1 pcs), 260KG;
Package size 2 : 1100x800x2300 (1 pcs), 530KG.



Connection terminal
Material : Al alloy



Main technical parameters of the product		Unit	Parameters
Rated voltage		kV	72.5
Rated frequency		Hz	50/60
Rated current		A	up to 3150
Rated short-time withstand current, up to 3 s		kA	40
Rated peak withstand current		kA	100
Rated short-duration power-frequency withstand voltage, 1 min		kV	140
Rated short-duration power-frequency withstand voltage, 1 min across open contacts		kV	180
Rated lightning impulse withstand voltage, 1 min across open contacts		kV	325
Rated lightning impulse withstand voltage, 1.2/50 μs across open contacts		kV	375
Rated filling pressure (abs. at 20 ° C) circuit-breaker / other components		Mpa	0.6/0.6
Minimum functional pressure (abs. at 20 ° C) circuit-breaker / other components		Mpa	0.5/0.5
Temperature range (ambient)		° C	-30...+40
Type of installation			outdoor
Partial discharge capacity		PC	<5
SFR leakage rate per year			<0.5%
Maintenance cycle		Year	30

DRAWING NO. DATE

DESIGNED BY: _____
 CHECKED BY: _____
 APPROVED BY: _____

DWG. NO. _____
 FILE: _____

SCALE: _____

PAGE: _____
 TOTAL PAGE: _____

MATERIAL

RHB-72.5(S)

APPROVED BY: _____

PROJECT: _____

WENZHOU ROCKWILL ELECTRIC CO.LTD.