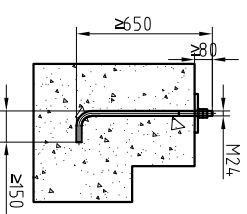
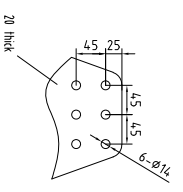


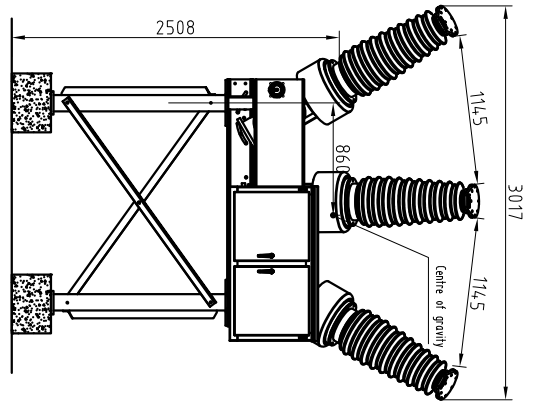
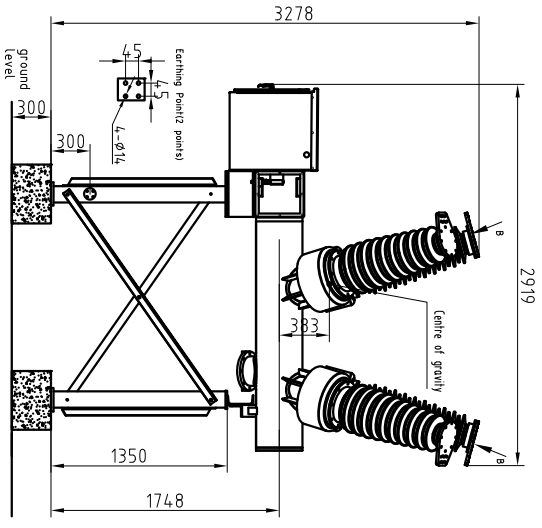
TECHNICAL DEPARTMENT 30/PAGE  
 DRAWING NO. \_\_\_\_\_  
 DATE OF ISSUE \_\_\_\_\_  
 CHECKED BY \_\_\_\_\_  
 APPROVED BY \_\_\_\_\_  
 DESIGNER \_\_\_\_\_  
 DATE \_\_\_\_\_  
 DWG. NO. \_\_\_\_\_  
 FILE \_\_\_\_\_  
 TOTAL PAGE \_\_\_\_\_

**B**  
 Connection terminal  
 Material :Al alloy  
 Anchor bolt  
 (Providing by client)

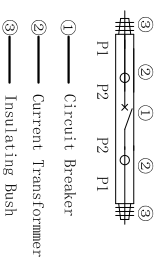
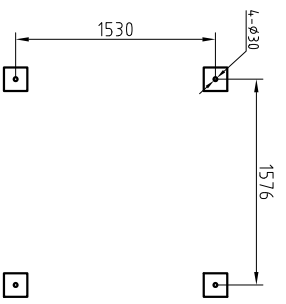
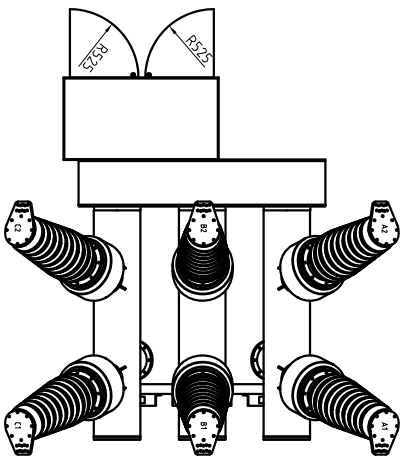


**Technical requirements:**

- 1、Total weight:2100 Kg
  - 2、Foundation static load: 21000 N
  - 3、Foundation dynamic load: 30000 N
  - 4、Package size 1 :3000x2100x2200 (1 pcs)
  - 5、Package size 2 :1200x600x600 (1 pcs)
- Vertical direction (upward): 31000N (including self weight);  
 The height difference of the foundation shall not exceed 2mm;  
 The levelness of each base surface shall not exceed 2mm.



Installation foundation



Current transformer ratio	Accuracy class	RF
P1	0.5	
P2	1.0	

Item	Unit	Parameter
Rated voltage	kV	72.5
Rated frequency	Hz	50/60
Rated current	A	up to 350
Rated short-line withstand current up to 3 s	kA	4.0
Rated peak withstand current	kA	100
Rated short-duration power-frequency withstand voltage 1 min	kV	140
Power-frequency withstand voltage 1 min across open contacts	kV	160
Rated lightning impulse withstand voltage 125kV 3s	kV	375
Rated lightning impulse withstand voltage 1.2/50 5s across open contacts	Mpa	0.6/0.6
Rated filling pressure (abs. at 20 °C circuit-breaker)	Mpa	0.5/0.5
Minimum (maximum) pressure (abs. at 20 °C circuit-breaker)	°C	-30...+40
Temperature range (ambient)	°C	-30...+40
Type of installation	PC	outdoor
Partial discharge capacity		5
Sf6 leakage rate per year		<0.5%
Maintenance cycle	Year	30

C

B

A

D



DESIGNED BY: \_\_\_\_\_  
 CHECKED BY: \_\_\_\_\_  
 APPROVED BY: \_\_\_\_\_  
 DATE: \_\_\_\_\_

RHD-72.5

DESIGNED BY: \_\_\_\_\_  
 CHECKED BY: \_\_\_\_\_  
 APPROVED BY: \_\_\_\_\_  
 DATE: \_\_\_\_\_  
 DWG. NO. \_\_\_\_\_  
 FILE: \_\_\_\_\_  
 TOTAL PAGE \_\_\_\_\_